

# Summary of Employment, Demographics, and Commuting Patterns for Hardee County, Florida

---



**FLORIDA DEPARTMENT *of*  
ECONOMIC OPPORTUNITY**

October 2019

**Contents**

Labor Shed Analysis ..... 3

OnTheMap, Census Bureau..... 3

Florida Department of Economic Opportunity, Bureau of Workforce Statistics and Economic Research (WSER) ..... 3

Executive Summary ..... 4

People QuickFacts ..... 5

Business and Geography QuickFacts ..... 7

Labor Force, Employment, and Unemployment ..... 7

Population ..... 7

Where Workers Work in Hardee County ..... 8

Work Area Profile Summary ..... 9

Work Area Profile Summary - Demographics ..... 10

Where Workers Live in Hardee County ..... 11

Home Area Profile Summary ..... 12

Home Area Profile Summary - Demographics ..... 13

Labor Inflow/Outflow Map ..... 14

Labor Inflow/Outflow Summary ..... 15

Work Destination Summary ..... 17

Home Destination Summary ..... 18

## **Labor Shed Analysis**

A labor shed analysis is defined as where workers work and where workers live relative to a user-defined selection area. This analysis helps to determine where a labor market draws its commuting workers. Labor shed studies can draw comparisons between various geographies including state, Congressional District, Metropolitan Statistical Area (MSA), county, Workforce Investment Area (WIA), Zip Code, and Census tract. By indicating how many of the selection area workers work outside the area, labor sheds can help identify potential pools of workers who would be available for work in the user-defined area.

Labor shed studies provide economic developers and existing or prospective employers a tool to understand the local labor market and make informed expansion and site selection decisions. In addition, labor shed studies can help indicate potential impacts from environmental, social, or economic incidents.

## **OnTheMap, Census Bureau**

OnTheMap is a mapping and reporting tool developed by the U.S. Census Bureau showing employment and home locations of workers with companion reports for user-defined areas. It is the first synthetic data product released by the Census Bureau. OnTheMap is an important tool for Florida to perform labor inflow/outflow analyses and provide commuting data to planning and economic development agencies as well as Regional Workforce Boards. OnTheMap data is also used by the Department of Economic Opportunity to help quantify natural disaster impacts for emergency management agencies based on where workers live and where they work.

OnTheMap integrates existing data from state-supplied administrative records on workers and employers with existing federal censuses, surveys, and other administrative records. The state Labor Market Information (LMI) agencies supply key data from unemployment wage records and from businesses each quarter. The Census Bureau merges the state-supplied data with current demographic information to produce the data found in OnTheMap. By combining data from different administrative sources, censuses, and surveys, the Census Bureau produces local employment information that was not previously available.

## **Florida Department of Economic Opportunity, Bureau of Workforce Statistics and Economic Research (WSER)**

The Florida Department of Economic Opportunity, Bureau of Workforce Statistics and Economic Research (WSER), produces, analyzes, and distributes labor statistics to improve economic decision making. These data are produced as part of the federal/state cooperative statistical program with the U.S. Department of Labor, Bureau of Labor Statistics, and the Employment and Training Administration.

# Executive Summary

The analysis of workforce and demographic characteristics, including commuting patterns of Hardee County was conducted to provide economic data on the population and labor force living or working in the county. The report is useful for detailing where workers work and live in order to align resources. This report includes population, labor force, and demographics for Hardee County.

Workers employed in Hardee County are clustered in the Agriculture, Forestry, Fishing and Hunting (19.1%), and Health Care and Social Assistance (13.6%) industries. Workers living in Hardee County are concentrated in the Retail Trade (11.8%), and Health Care and Social Assistance (11.3%) industries.

A detailed examination of commuting patterns for Hardee County shows that the county has a net outflow of -2,062 workers. Using the latest annual Census data available, there were 6,568 workers employed in Hardee County and 8,630 workers living in Hardee County. Of the workers who lived in the county, 5,878 workers (68.1%) were employed outside the county.

With 68.1% of workers who reside in Hardee County employed outside the county, Hardee County had the 19<sup>th</sup> highest outflow ranking among Florida counties. Glades County (89.0%) had the highest outflow rate, followed by Union County (86.3%), and Gilchrist County (85.1%). Miami-Dade County (23.4%), Duval County (26.0%), and Escambia County (28.0%) had the lowest worker outflow rates.

Of the 5,878 Hardee County workers employed outside the county, the top destination counties are Polk County (1,266 workers), Highlands County (553 workers), and Hillsborough County (382 workers). Of the 3,816 Hardee County workers living outside the county, the top origin counties are Polk County (732 workers), Highlands County (667 workers), and Hillsborough County (331 workers).

# Hardee County

## People QuickFacts

	Hardee County	Florida	United States
<b>Population</b>			
Population estimates, July 1, 2018, (V2018)	27,245	21,299,325	327,167,434
Population estimates base, April 1, 2010, (V2018)	27,731	18,804,580	308,758,105
Population, percent change - April 1, 2010 (estimates base) to July 1, 2018, (V2018)	-1.8%	13.3%	6.0%
Population, Census, April 1, 2010	27,731	18,801,310	308,745,538
<b>Age and Sex</b>			
Persons under 5 years, percent	6.9%	5.4%	6.1%
Persons under 18 years, percent	26.2%	19.9%	22.4%
Persons 65 years and over, percent	16.6%	20.5%	16.0%
Female persons, percent	47.2%	51.1%	50.8%
<b>Race and Hispanic Origin</b>			
White alone, percent	88.4%	77.3%	76.5%
Black or African American alone, percent(a)	7.5%	16.9%	13.4%
American Indian and Alaska Native alone, percent(a)	1.2%	0.5%	1.3%
Asian alone, percent(a)	1.1%	3.0%	5.9%
Native Hawaiian and Other Pacific Islander alone, percent(a)	0.1%	0.1%	0.2%
Two or More Races, percent	1.7%	2.2%	2.7%
Hispanic or Latino, percent(b)	44.0%	26.1%	18.3%
White alone, not Hispanic or Latino, percent	46.7%	53.5%	60.4%
<b>Population Characteristics</b>			
Veterans, 2013-2017	1,356	1,454,632	18,939,219
Foreign born persons, percent, 2013-2017	13.1%	20.2%	13.4%
<b>Housing</b>			
Housing units, July 1, 2018, (V2018)	9,750	9,547,305	138,537,078
Owner-occupied housing unit rate, 2013-2017	68.5%	64.8%	63.8%
Median value of owner-occupied housing units, 2013-2017	\$81,200	\$178,700	\$193,500
Median selected monthly owner costs -with a mortgage, 2013-2017	\$952	\$1,432	\$1,515
Median selected monthly owner costs -without a mortgage, 2013-2017	\$340	\$475	\$474
Median gross rent, 2013-2017	\$675	\$1,077	\$982
Building permits, 2018	45	144,427	1,328,827
<b>Legend</b>			
The vintage year (e.g., V2016) refers to the final year of the series (2010 thru 2016). Different vintage years of estimates are not comparable.			
<i>Fact Notes</i>			
(a) Includes persons reporting only one race			
(b) Hispanics may be of any race, so also are included in applicable race categories			
(c) Economic Census - Puerto Rico data are not comparable to U.S. Economic Census data			
<i>Value Flags</i>			
"-." No or too few sample observations were available to compute an estimate.			
"D" Suppressed to avoid disclosure of confidential information			
"F" Fewer than 25 firms			
"NA" Not available			
"S" Suppressed; does not meet publication standards			
"Z" Value greater than zero but less than half unit of measure shown			

Source: U.S. Census Bureau, State & County QuickFacts.

# Hardee County

## People QuickFacts (continued)

	Hardee County	Florida	United States
<b>Families &amp; Living Arrangements</b>			
Households, 2013-2017	7,718	7,510,882	118,825,921
Persons per household, 2013-2017	3.26	2.64	2.63
Living in same house 1 year ago, percent of persons age 1 year+, 2013-2017	92.0%	84.1%	85.4%
Language other than English spoken at home, percent of persons age 5 years+, 2013-2017	38.0%	28.7%	21.3%
<b>Computer and Internet Use</b>			
Households with a computer, percent, 2013-2017	67.7%	88.1%	87.2%
Households with a broadband Internet subscription, percent, 2013-2017	54.9%	78.6%	78.1%
<b>Education</b>			
High school graduate or higher, percent of persons age 25 years+, 2013-2017	72.0%	87.6%	87.3%
Bachelor's degree or higher, percent of persons age 25 years+, 2013-2017	10.5%	28.5%	30.9%
<b>Health</b>			
With a disability, under age 65 years, percent, 2013-2017	6.9%	8.6%	8.7%
Persons without health insurance, under age 65 years, percent	20.0%	16.0%	10.0%
<b>Economy</b>			
In civilian labor force, total, percent of population age 16 years+, 2013-2017	52.1%	58.4%	63.0%
In civilian labor force, female, percent of population age 16 years+, 2013-2017	46.7%	54.1%	58.2%
Total accommodation and food services sales, 2012 (\$1,000)(c)	17,225	49,817,925	708,138,598
Total health care and social assistance receipts/revenue, 2012 (\$1,000)(c)	82,042	124,061,425	2,040,441,203
Total manufacturers shipments, 2012 (\$1,000)(c)	D	96,924,106	5,696,729,632
Total merchant wholesaler sales, 2012 (\$1,000)(c)	176,754	252,626,608	5,208,023,478
Total retail sales, 2012 (\$1,000)(c)	172,130	273,867,145	4,219,821,871
Total retail sales per capita, 2012(c)	\$6,256	\$14,177	\$13,443
<b>Transportation</b>			
Mean travel time to work (minutes), workers age 16 years+, 2013-2017	23.9	27.0	26.4
<b>Income &amp; Poverty</b>			
Median household income (in 2017 dollars), 2013-2017	\$39,063	\$50,883	\$57,652
Per capita income in past 12 months (in 2017 dollars), 2013-2017	\$18,643	\$28,774	\$31,177
Persons in poverty, percent	23.3%	13.6%	11.8%
<b>Legend</b>			
The vintage year (e.g., V2016) refers to the final year of the series (2010 thru 2016). Different vintage years of estimates are not comparable.			
<i>Fact Notes</i>			
(a) Includes persons reporting only one race			
(b) Hispanics may be of any race, so also are included in applicable race categories			
(c) Economic Census - Puerto Rico data are not comparable to U.S. Economic Census data			
<i>Value Flags</i>			
"-" No or too few sample observations were available to compute an estimate.			
"D" Suppressed to avoid disclosure of confidential information			
"F" Fewer than 25 firms			
"NA" Not available			
"S" Suppressed; does not meet publication standards			
"Z" Value greater than zero but less than half unit of measure shown			

Source: U.S. Census Bureau, State & County QuickFacts.

# Hardee County

## Business and Geography QuickFacts

	Hardee County	Florida	United States
<b>Businesses</b>			
Total employer establishments, 2016	384	546,218	7,757,807
Total employment, 2016	4,129	8,169,642	126,752,238
Total annual payroll, 2016 (\$1,000)	139,765	363,336,322	6,435,142,055
Total employment, percent change, 2015-2016	2.0%	5.0%	2.1%
Total nonemployer establishments, 2017	1,333	2,245,127	25,701,671
All firms, 2012	1,631	2,100,187	27,626,360
Men-owned firms, 2012	779	1,084,885	14,844,597
Women-owned firms, 2012	557	807,817	9,878,397
Minority-owned firms, 2012	770	926,112	7,952,386
Nonminority-owned firms, 2012	773	1,121,749	18,987,918
Veteran-owned firms, 2012	72	185,756	2,521,682
Nonveteran-owned firms, 2012	1,436	1,846,686	24,070,685
<b>Geography</b>			
Population per square mile, 2010	43.5	350.6	87.4
Land area in square miles, 2010	637.78	53,624.76	3,531,905.43
FIPS Code	12049	12	00

Source: U.S. Census Bureau, State & County QuickFacts.

## Labor Force, Employment, and Unemployment

	August 2019				August 2018			
	LABOR	EMPLOY-	UNEMPLOYMENT		LABOR	EMPLOY-	UNEMPLOYMENT	
	FORCE	MENT	LEVEL	RATE (%)	FORCE	MENT	LEVEL	RATE (%)
Workforce Region 19	75,721	72,105	3,616	4.8	75,155	71,514	3,641	4.8
DeSoto County	13,688	13,150	538	3.9	13,478	12,927	551	4.1
Hardee County	8,124	7,614	510	6.3	8,343	7,810	533	6.4
Highlands County	35,743	33,895	1,848	5.2	35,660	33,819	1,841	5.2
Okeechobee County	18,166	17,446	720	4.0	17,674	16,958	716	4.1
Florida	10,455,000	10,086,000	368,000	3.5	10,184,000	9,811,000	373,000	3.7
United States	164,019,000	157,816,000	6,203,000	3.8	161,909,000	155,539,000	6,370,000	3.9

Source: U.S. Department of Labor, Bureau of Labor Statistics, Local Area Unemployment Statistics.

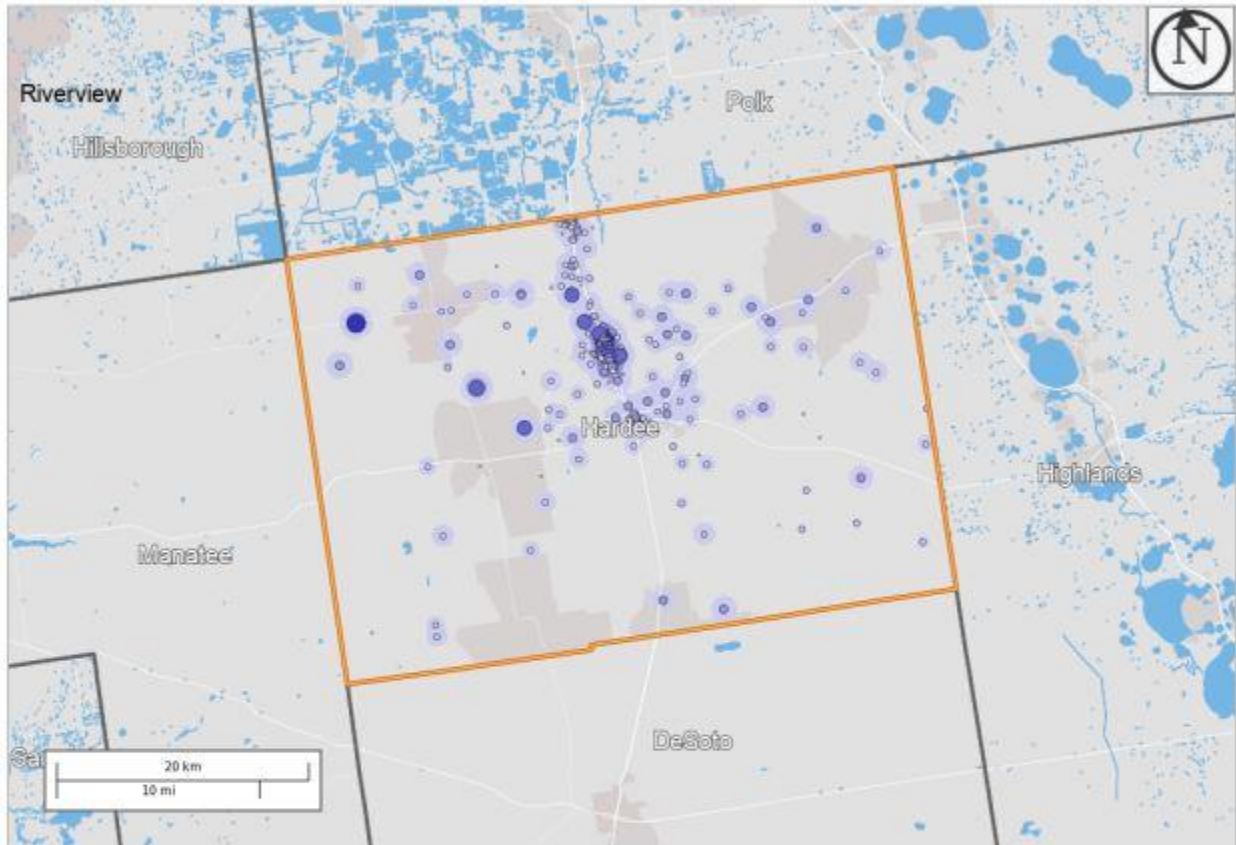
## Population

	Population Estimate (as of July 1)							
	2011	2012	2013	2014	2015	2016	2017	2018
Workforce Region 19	200,871	200,390	199,803	200,812	202,893	206,397	209,702	211,695
DeSoto County	34,841	35,006	34,905	35,344	35,650	36,261	37,252	37,489
Hardee County	27,682	27,444	27,319	27,281	27,185	27,229	27,202	27,245
Highlands County	98,477	98,222	98,088	98,606	100,222	102,191	104,060	105,424
Okeechobee County	39,871	39,718	39,491	39,581	39,836	40,716	41,188	41,537
Florida	19,093,352	19,326,230	19,563,166	19,860,330	20,224,249	20,629,982	20,976,812	21,299,325
United States	311,580,009	313,874,218	316,057,727	318,386,421	320,742,673	323,071,342	325,147,121	327,167,434

Source: U.S. Census Bureau, Population Division.

# Hardee County

## Where Workers Work in Hardee County



### Map Legend

#### Job Density [Jobs/Sq. Mile]

- 5 - 126
- 127 - 491
- 492 - 1,098
- 1,099 - 1,949
- 1,950 - 3,043

#### Job Count [Jobs/Census Block]

- 1 - 2
- 3 - 22
- 23 - 109
- 110 - 343
- 344 - 838

#### Selection Areas

- ★ Analysis Selection



Source: U.S. Census Bureau, OnTheMap Application and Longitudinal Employer-Household Dynamics program.



# Hardee County

## Work Area Profile Summary

	Count	Share
<b>Total Primary Jobs</b>	6,568	100.0%
<b>Jobs by Worker Age</b>		
Age 29 or younger	1,365	20.8%
Age 30 to 54	3,489	53.1%
Age 55 or older	1,714	26.1%
<b>Jobs by Earnings</b>		
\$1,250 per month or less	1,465	22.3%
\$1,251 to \$3,333 per month	3,252	49.5%
More than \$3,333 per month	1,851	28.2%
<b>Jobs by NAICS Industry Sector</b>		
Agriculture, Forestry, Fishing and Hunting	1,252	19.1%
Mining, Quarrying, and Oil and Gas Extraction	2	0.0%
Utilities	148	2.3%
Construction	278	4.2%
Manufacturing	334	5.1%
Wholesale Trade	105	1.6%
Retail Trade	606	9.2%
Transportation and Warehousing	23	0.4%
Information	40	0.6%
Finance and Insurance	256	3.9%
Real Estate and Rental and Leasing	39	0.6%
Professional, Scientific, and Technical Services	138	2.1%
Management of Companies and Enterprises	10	0.2%
Administration & Support, Waste Management and Remediation	186	2.8%
Educational Services	858	13.1%
Health Care and Social Assistance	893	13.6%
Arts, Entertainment, and Recreation	86	1.3%
Accommodation and Food Services	410	6.2%
Other Services (excluding Public Administration)	67	1.0%
Public Administration	837	12.7%

Source: U.S. Census Bureau, OnTheMap Application and Longitudinal Employer-Household Dynamics program.

# Hardee County

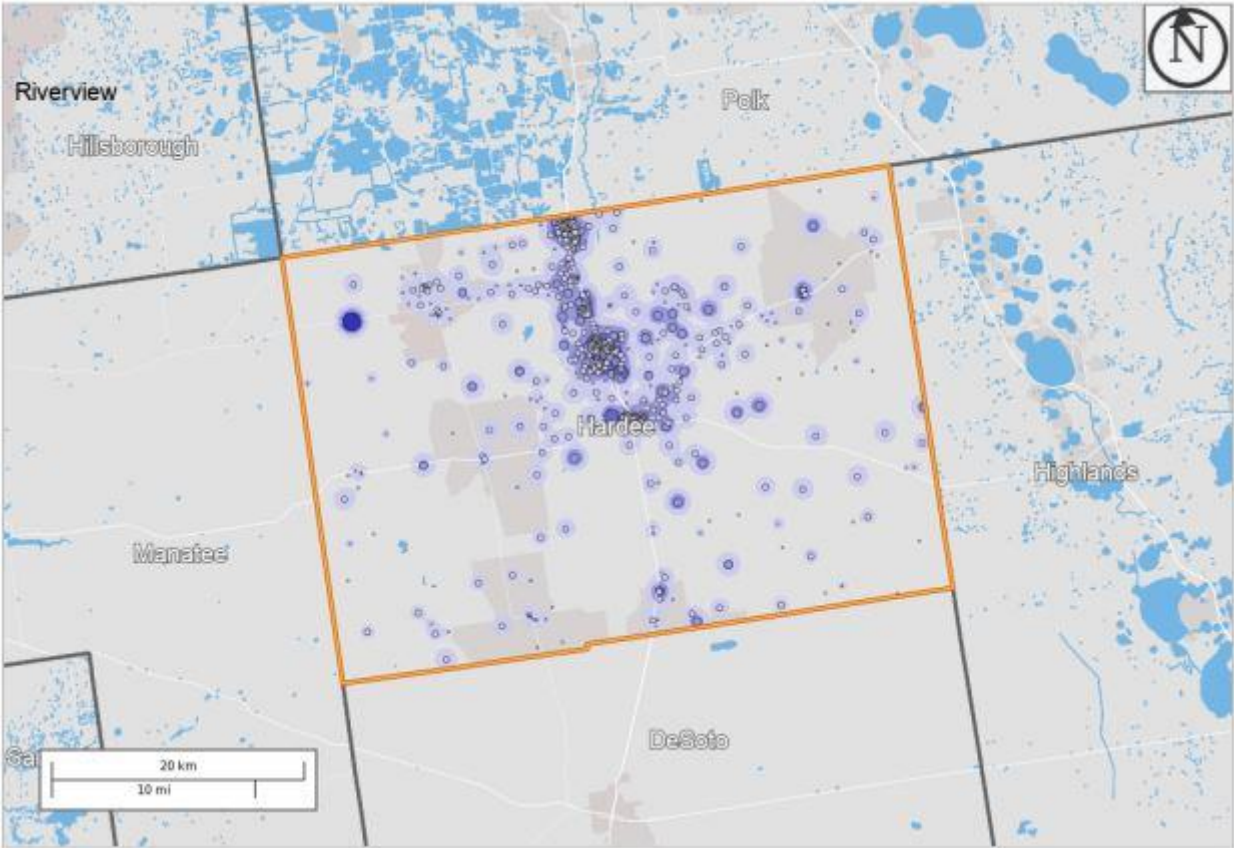
## Work Area Profile Summary - Demographics

<b>Jobs by Worker Race</b>		
White Alone	5,584	85.0%
Black or African American Alone	741	11.3%
American Indian or Alaska Native Alone	47	0.7%
Asian Alone	101	1.5%
Native Hawaiian or Other Pacific Islander Alone	11	0.2%
Two or More Race Groups	84	1.3%
<b>Jobs by Worker Ethnicity</b>		
Not Hispanic or Latino	4,822	73.4%
Hispanic or Latino	1,746	26.6%
<b>Jobs by Worker Educational Attainment</b>		
Less than high school	1,067	16.2%
High school or equivalent, no college	1,549	23.6%
Some college or Associate degree	1,569	23.9%
Bachelor's degree or advanced degree	1,018	15.5%
Educational attainment not available (workers aged 29 or younger)	1,365	20.8%
<b>Jobs by Worker Sex</b>		
Male	3,222	49.1%
Female	3,346	50.9%

Source: U.S. Census Bureau, OnTheMap Application and Longitudinal Employer-Household Dynamics program.

# Hardee County

## Where Workers Live in Hardee County



### Map Legend

<b>Job Density [Jobs/Sq. Mile]</b>	<b>Job Count [Jobs/Census Block]</b>
■ 5 - 54	● 1 - 4
■ 55 - 203	● 5 - 32
■ 204 - 451	● 33 - 107
■ 452 - 799	● 108 - 254
■ 800 - 1,246	● 255 - 496
	<b>Selection Areas</b>
	★ Analysis Selection



Source: U.S. Census Bureau, OnTheMap Application and Longitudinal Employer-Household Dynamics program.

# Hardee County

## Home Area Profile Summary

	Count	Share
<b>Total Primary Jobs</b>	8,630	100.0%
<b>Jobs by Worker Age</b>		
Age 29 or younger	2,055	23.8%
Age 30 to 54	4,453	51.6%
Age 55 or older	2,122	24.6%
<b>Jobs by Earnings</b>		
\$1,250 per month or less	1,954	22.6%
\$1,251 to \$3,333 per month	3,880	45.0%
More than \$3,333 per month	2,796	32.4%
<b>Jobs by NAICS Industry Sector</b>		
Agriculture, Forestry, Fishing and Hunting	905	10.5%
Mining, Quarrying, and Oil and Gas Extraction	81	0.9%
Utilities	68	0.8%
Construction	706	8.2%
Manufacturing	637	7.4%
Wholesale Trade	266	3.1%
Retail Trade	1,019	11.8%
Transportation and Warehousing	157	1.8%
Information	74	0.9%
Finance and Insurance	274	3.2%
Real Estate and Rental and Leasing	94	1.1%
Professional, Scientific, and Technical Services	239	2.8%
Management of Companies and Enterprises	90	1.0%
Administration & Support, Waste Management and Remediation	549	6.4%
Educational Services	736	8.5%
Health Care and Social Assistance	972	11.3%
Arts, Entertainment, and Recreation	144	1.7%
Accommodation and Food Services	679	7.9%
Other Services (excluding Public Administration)	238	2.8%
Public Administration	702	8.1%

Source: U.S. Census Bureau, OnTheMap Application and Longitudinal Employer-Household Dynamics program.

# Hardee County

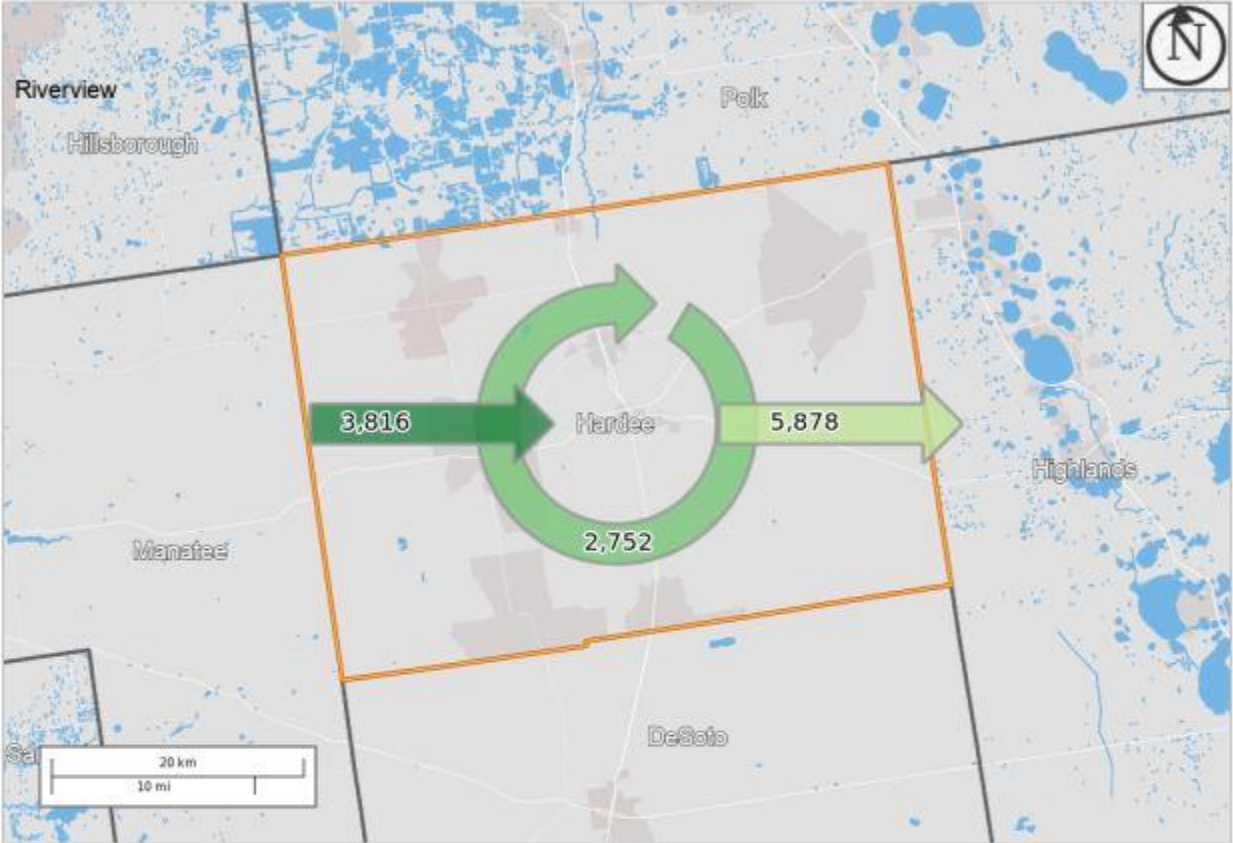
## Home Area Profile Summary - Demographics

<b>Jobs by Worker Race</b>		
White Alone	7,546	87.4%
Black or African American Alone	748	8.7%
American Indian or Alaska Native Alone	77	0.9%
Asian Alone	126	1.5%
Native Hawaiian or Other Pacific Islander Alone	9	0.1%
Two or More Race Groups	124	1.4%
<b>Jobs by Worker Ethnicity</b>		
Not Hispanic or Latino	5,828	67.5%
Hispanic or Latino	2,802	32.5%
<b>Jobs by Worker Educational Attainment</b>		
Less than high school	1,330	15.4%
High school or equivalent, no college	1,893	21.9%
Some college or Associate degree	1,948	22.6%
Bachelor's degree or advanced degree	1,404	16.3%
Educational attainment not available (workers aged 29 or younger)	2,055	23.8%
<b>Jobs by Worker Sex</b>		
Male	4,754	55.1%
Female	3,876	44.9%

Source: U.S. Census Bureau, OnTheMap Application and Longitudinal Employer-Household Dynamics program.

# Hardee County

## Labor Inflow/Outflow Map



### Map Legend

**Selection Areas**  
 ★ Analysis Selection

**Inflow/Outflow**  
 ◆ Employed and Live in Selection Area  
 ◆ Employed in Selection Area, Live Outside  
 ◆ Live in Selection Area, Employed Outside  
 ◆ Outside  
 Note: Overlay arrows do not indicate directionality of worker flow between home and employment locations.



Source: U.S. Census Bureau, OnTheMap Application and Longitudinal Employer-Household Dynamics program.

Of the 6,568 people who are employed in Hardee County, 2,752 (41.9%) live and work in the county. There are 3,816 (58.1%) workers who live outside Hardee County and work within the county. Of the 8,630 workers who live within Hardee County, 5,878 (68.1%) residents work outside the county. There is a net outflow of -2,062 workers from Hardee County.

# Hardee County

## Labor Inflow/Outflow Summary

<b>Selection Area Labor Market Size (Primary Jobs)</b>	<b>Count</b>	<b>Share</b>
Employed in the Selection Area	6,568	100.0%
Living in the Selection Area	8,630	131.4%
Net Job Inflow (+) or Outflow (-)	-2,062	-
<b>In-Area Labor Force Efficiency (Primary Jobs)</b>		
Living in the Selection Area	8,630	100.0%
Living and Employed in the Selection Area	2,752	31.9%
Living in the Selection Area but Employed Outside	5,878	68.1%
<b>In-Area Employment Efficiency (Primary Jobs)</b>		
Employed in the Selection Area	6,568	100.0%
Employed and Living in the Selection Area	2,752	41.9%
Employed in the Selection Area but Living Outside	3,816	58.1%
<b>Outflow Job Characteristics</b>		
External Jobs Filled by Residents	5,878	100.0%
Workers Aged 29 or younger	1,513	25.7%
Workers Aged 30 to 54	2,997	51.0%
Workers Aged 55 or older	1,368	23.3%
Workers Earning \$1,250 per month or less	1,386	23.6%
Workers Earning \$1,251 to \$3,333 per month	2,490	42.4%
Workers Earning More than \$3,333 per month	2,002	34.1%
Workers in the "Goods Producing" Industry Class	1,619	27.5%
Workers in the "Trade, Transportation, and Utilities" Industry Class	1,267	21.6%
Workers in the "All Other Services" Industry Class	2,992	50.9%

Source: U.S. Census Bureau, OnTheMap Application and Longitudinal Employer-Household Dynamics program.

# Hardee County

## Labor Inflow/Outflow Summary (continued)

<b>Inflow Job Characteristics (Primary Jobs)</b>	<b>Count</b>	<b>Share</b>
Internal Jobs Filled by Outside Workers	3,816	100.0%
Workers Aged 29 or younger	823	21.6%
Workers Aged 30 to 54	2,033	53.3%
Workers Aged 55 or older	960	25.2%
Workers Earning \$1,250 per month or less	897	23.5%
Workers Earning \$1,251 to \$3,333 per month	1,862	48.8%
Workers Earning More than \$3,333 per month	1,057	27.7%
Workers in the "Goods Producing" Industry Class	1,156	30.3%
Workers in the "Trade, Transportation, and Utilities" Industry Class	639	16.7%
Workers in the "All Other Services" Industry Class	2,021	53.0%
<b>Interior Flow Job Characteristics (Primary Jobs)</b>		
Internal Jobs Filled by Residents	2,752	100.0%
Workers Aged 29 or younger	542	19.7%
Workers Aged 30 to 54	1,456	52.9%
Workers Aged 55 or older	754	27.4%
Workers Earning \$1,250 per month or less	568	20.6%
Workers Earning \$1,251 to \$3,333 per month	1,390	50.5%
Workers Earning More than \$3,333 per month	794	28.9%
Workers in the "Goods Producing" Industry Class	710	25.8%
Workers in the "Trade, Transportation, and Utilities" Industry Class	243	8.8%
Workers in the "All Other Services" Industry Class	1,799	65.4%

Source: U.S. Census Bureau, OnTheMap Application and Longitudinal Employer-Household Dynamics program.



## Work Destination Summary

### Where Workers are Employed Who Live in Hardee County

	Count	Share
<b>Total Primary Jobs</b>	8,630	100.0%
<b>Job Counts by Counties Where Workers are Employed - Primary Jobs</b>		
Hardee County, FL	2,752	31.9%
Polk County, FL	1,266	14.7%
Highlands County, FL	553	6.4%
Hillsborough County, FL	382	4.4%
Lee County, FL	375	4.3%
Miami-Dade County, FL	367	4.3%
Manatee County, FL	293	3.4%
Broward County, FL	270	3.1%
DeSoto County, FL	267	3.1%
Palm Beach County, FL	263	3.0%
Sarasota County, FL	243	2.8%
Orange County, FL	204	2.4%
Charlotte County, FL	136	1.6%
Collier County, FL	131	1.5%
St. Lucie County, FL	118	1.4%
Pinellas County, FL	109	1.3%
Martin County, FL	85	1.0%
Okeechobee County, FL	76	0.9%
Brevard County, FL	60	0.7%
Duval County, FL	60	0.7%
Indian River County, FL	56	0.6%
Seminole County, FL	55	0.6%
Osceola County, FL	48	0.6%
Hendry County, FL	44	0.5%
Lake County, FL	36	0.4%
All Other Locations	381	4.4%

Source: U.S. Census Bureau, OnTheMap Application and Longitudinal Employer-Household Dynamics program.

## Home Destination Summary

### Where Workers Live Who are Employed in Hardee County

	Count	Share
<b>Total Primary Jobs</b>	6,568	100.0%
<b>Job Counts by Counties Where Workers Live - Primary Jobs</b>		
Hardee County, FL	2,752	41.9%
Polk County, FL	732	11.1%
Highlands County, FL	667	10.2%
Hillsborough County, FL	331	5.0%
DeSoto County, FL	234	3.6%
Manatee County, FL	219	3.3%
Lee County, FL	128	1.9%
Orange County, FL	101	1.5%
Sarasota County, FL	101	1.5%
Charlotte County, FL	96	1.5%
Collier County, FL	90	1.4%
Pinellas County, FL	90	1.4%
Pasco County, FL	89	1.4%
Palm Beach County, FL	88	1.3%
Miami-Dade County, FL	82	1.2%
Brevard County, FL	66	1.0%
Hendry County, FL	57	0.9%
Marion County, FL	51	0.8%
Seminole County, FL	48	0.7%
Volusia County, FL	47	0.7%
Broward County, FL	46	0.7%
St. Lucie County, FL	45	0.7%
Osceola County, FL	44	0.7%
Hernando County, FL	37	0.6%
Lake County, FL	29	0.4%
All Other Locations	298	4.5%

Source: U.S. Census Bureau, OnTheMap Application and Longitudinal Employer-Household Dynamics program.

**Florida Department of Economic Opportunity  
Bureau of Workforce Statistics and Economic Research  
(WSER)**

**Caldwell Building  
MSC G-020  
107 E. Madison Street  
Tallahassee, Florida 32399-4111  
Phone (850) 245-7257**



**[www.floridajobs.org/wser](http://www.floridajobs.org/wser)**