

Summary of Employment, Demographics, and Commuting Patterns for Highlands County, Florida



**FLORIDA DEPARTMENT *of*
ECONOMIC OPPORTUNITY**

October 2019

Contents

Labor Shed Analysis 3

OnTheMap, Census Bureau..... 3

Florida Department of Economic Opportunity, Bureau of Workforce Statistics and Economic Research (WSER) 3

Executive Summary 4

People QuickFacts 5

Business and Geography QuickFacts 7

Labor Force, Employment, and Unemployment 7

Population 7

Where Workers Work in Highlands County 8

Work Area Profile Summary 9

Work Area Profile Summary - Demographics 10

Where Workers Live in Highlands County 11

Home Area Profile Summary 12

Home Area Profile Summary - Demographics 13

Labor Inflow/Outflow Map 14

Labor Inflow/Outflow Summary 15

Work Destination Summary 17

Home Destination Summary 18

Labor Shed Analysis

A labor shed analysis is defined as where workers work and where workers live relative to a user-defined selection area. This analysis helps to determine where a labor market draws its commuting workers. Labor shed studies can draw comparisons between various geographies including state, Congressional District, Metropolitan Statistical Area (MSA), county, Workforce Investment Area (WIA), Zip Code, and Census tract. By indicating how many of the selection area workers work outside the area, labor sheds can help identify potential pools of workers who would be available for work in the user-defined area.

Labor shed studies provide economic developers and existing or prospective employers a tool to understand the local labor market and make informed expansion and site selection decisions. In addition, labor shed studies can help indicate potential impacts from environmental, social, or economic incidents.

OnTheMap, Census Bureau

OnTheMap is a mapping and reporting tool developed by the U.S. Census Bureau showing employment and home locations of workers with companion reports for user-defined areas. It is the first synthetic data product released by the Census Bureau. OnTheMap is an important tool for Florida to perform labor inflow/outflow analyses and provide commuting data to planning and economic development agencies as well as Regional Workforce Boards. OnTheMap data is also used by the Department of Economic Opportunity to help quantify natural disaster impacts for emergency management agencies based on where workers live and where they work.

OnTheMap integrates existing data from state-supplied administrative records on workers and employers with existing federal censuses, surveys, and other administrative records. The state Labor Market Information (LMI) agencies supply key data from unemployment wage records and from businesses each quarter. The Census Bureau merges the state-supplied data with current demographic information to produce the data found in OnTheMap. By combining data from different administrative sources, censuses, and surveys, the Census Bureau produces local employment information that was not previously available.

Florida Department of Economic Opportunity, Bureau of Workforce Statistics and Economic Research (WSER)

The Florida Department of Economic Opportunity, Bureau of Workforce Statistics and Economic Research (WSER), produces, analyzes, and distributes labor statistics to improve economic decision making. These data are produced as part of the federal/state cooperative statistical program with the U.S. Department of Labor, Bureau of Labor Statistics, and the Employment and Training Administration.

Executive Summary

The analysis of workforce and demographic characteristics, including commuting patterns of Highlands County was conducted to provide economic data on the population and labor force living or working in the county. The report is useful for detailing where workers work and live in order to align resources. This report includes population, labor force, and demographics for Highlands County.

Workers employed in Highlands County are clustered in the Health Care and Social Assistance (21.4%), and Retail Trade (15.4%) industries. Workers living in Highlands County are concentrated in the Health Care and Social Assistance (16.4%), and Retail Trade (14.1%) industries.

A detailed examination of commuting patterns for Highlands County shows that the county has a net outflow of -7,164 workers. Using the latest annual Census data available, there were 24,417 workers employed in Highlands County and 31,581 workers living in Highlands County. Of the workers who lived in the county, 17,190 workers (54.4%) were employed outside the county.

With 54.4% of workers who reside in Highlands County employed outside the county, Highlands County had the 25th lowest outflow ranking among Florida counties. Glades County (89.0%) had the highest outflow rate, followed by Union County (86.3%), and Gilchrist County (85.1%). Miami-Dade County (23.4%), Duval County (26.0%), and Escambia County (28.0%) had the lowest worker outflow rates.

Of the 17,190 Highlands County workers employed outside the county, the top destination counties are Polk County (2,514 workers), Lee County (1,655 workers), and Miami-Dade County (1,131 workers). Of the 10,026 Highlands County workers living outside the county, the top origin counties are Polk County (1,861 workers), Hillsborough County (555 workers), and Hardee County (553 workers).

Highlands County

People QuickFacts

	Highlands County	Florida	United States
Population			
Population estimates, July 1, 2018, (V2018)	105,424	21,299,325	327,167,434
Population estimates base, April 1, 2010, (V2018)	98,786	18,804,580	308,758,105
Population, percent change - April 1, 2010 (estimates base) to July 1, 2018, (V2018)	6.7%	13.3%	6.0%
Population, Census, April 1, 2010	98,786	18,801,310	308,745,538
Age and Sex			
Persons under 5 years, percent	4.6%	5.4%	6.1%
Persons under 18 years, percent	17.0%	19.9%	22.4%
Persons 65 years and over, percent	35.3%	20.5%	16.0%
Female persons, percent	51.1%	51.1%	50.8%
Race and Hispanic Origin			
White alone, percent	85.4%	77.3%	76.5%
Black or African American alone, percent(a)	10.5%	16.9%	13.4%
American Indian and Alaska Native alone, percent(a)	0.7%	0.5%	1.3%
Asian alone, percent(a)	1.6%	3.0%	5.9%
Native Hawaiian and Other Pacific Islander alone, percent(a)	0.1%	0.1%	0.2%
Two or More Races, percent	1.7%	2.2%	2.7%
Hispanic or Latino, percent(b)	20.8%	26.1%	18.3%
White alone, not Hispanic or Latino, percent	66.4%	53.5%	60.4%
Population Characteristics			
Veterans, 2013-2017	11,598	1,454,632	18,939,219
Foreign born persons, percent, 2013-2017	11.1%	20.2%	13.4%
Housing			
Housing units, July 1, 2018, (V2018)	55,759	9,547,305	138,537,078
Owner-occupied housing unit rate, 2013-2017	74.7%	64.8%	63.8%
Median value of owner-occupied housing units, 2013-2017	\$87,900	\$178,700	\$193,500
Median selected monthly owner costs -with a mortgage, 2013-2017	\$957	\$1,432	\$1,515
Median selected monthly owner costs -without a mortgage, 2013-2017	\$314	\$475	\$474
Median gross rent, 2013-2017	\$745	\$1,077	\$982
Building permits, 2018	271	144,427	1,328,827
Legend			
The vintage year (e.g., V2016) refers to the final year of the series (2010 thru 2016). Different vintage years of estimates are not comparable.			
Fact Notes			
(a) Includes persons reporting only one race			
(b) Hispanics may be of any race, so also are included in applicable race categories			
(c) Economic Census - Puerto Rico data are not comparable to U.S. Economic Census data			
Value Flags			
"-." No or too few sample observations were available to compute an estimate.			
"D" Suppressed to avoid disclosure of confidential information			
"F" Fewer than 25 firms			
"NA" Not available			
"S" Suppressed; does not meet publication standards			
"Z" Value greater than zero but less than half unit of measure shown			

Source: U.S. Census Bureau, State & County QuickFacts.

Highlands County

People QuickFacts (continued)

	Highlands County	Florida	United States
Families & Living Arrangements			
Households, 2013-2017	41,350	7,510,882	118,825,921
Persons per household, 2013-2017	2.38	2.64	2.63
Living in same house 1 year ago, percent of persons age 1 year+, 2013-2017	83.5%	84.1%	85.4%
Language other than English spoken at home, percent of persons age 5 years+, 2013-2017	18.8%	28.7%	21.3%
Computer and Internet Use			
Households with a computer, percent, 2013-2017	78.0%	88.1%	87.2%
Households with a broadband Internet subscription, percent, 2013-2017	67.6%	78.6%	78.1%
Education			
High school graduate or higher, percent of persons age 25 years+, 2013-2017	84.0%	87.6%	87.3%
Bachelor's degree or higher, percent of persons age 25 years+, 2013-2017	17.1%	28.5%	30.9%
Health			
With a disability, under age 65 years, percent, 2013-2017	12.8%	8.6%	8.7%
Persons without health insurance, under age 65 years, percent	18.5%	16.0%	10.0%
Economy			
In civilian labor force, total, percent of population age 16 years+, 2013-2017	42.7%	58.4%	63.0%
In civilian labor force, female, percent of population age 16 years+, 2013-2017	39.3%	54.1%	58.2%
Total accommodation and food services sales, 2012 (\$1,000)(c)	110,569	49,817,925	708,138,598
Total health care and social assistance receipts/revenue, 2012 (\$1,000)(c)	576,468	124,061,425	2,040,441,203
Total manufacturers shipments, 2012 (\$1,000)(c)	213,986	96,924,106	5,696,729,632
Total merchant wholesaler sales, 2012 (\$1,000)(c)	D	252,626,608	5,208,023,478
Total retail sales, 2012 (\$1,000)(c)	1,112,507	273,867,145	4,219,821,871
Total retail sales per capita, 2012(c)	\$11,337	\$14,177	\$13,443
Transportation			
Mean travel time to work (minutes), workers age 16 years+, 2013-2017	20.4	27.0	26.4
Income & Poverty			
Median household income (in 2017 dollars), 2013-2017	\$36,374	\$50,883	\$57,652
Per capita income in past 12 months (in 2017 dollars), 2013-2017	\$23,020	\$28,774	\$31,177
Persons in poverty, percent	19.8%	13.6%	11.8%
Legend			
The vintage year (e.g., V2016) refers to the final year of the series (2010 thru 2016). Different vintage years of estimates are not comparable.			
<i>Fact Notes</i>			
(a) Includes persons reporting only one race			
(b) Hispanics may be of any race, so also are included in applicable race categories			
(c) Economic Census - Puerto Rico data are not comparable to U.S. Economic Census data			
<i>Value Flags</i>			
"-" No or too few sample observations were available to compute an estimate.			
"D" Suppressed to avoid disclosure of confidential information			
"F" Fewer than 25 firms			
"NA" Not available			
"S" Suppressed; does not meet publication standards			
"Z" Value greater than zero but less than half unit of measure shown			

Source: U.S. Census Bureau, State & County QuickFacts.

Highlands County

Business and Geography QuickFacts

	Highlands County	Florida	United States
Businesses			
Total employer establishments, 2016	1,913	546,218	7,757,807
Total employment, 2016	20,419	8,169,642	126,752,238
Total annual payroll, 2016 (\$1,000)	635,194	363,336,322	6,435,142,055
Total employment, percent change, 2015-2016	2.8%	5.0%	2.1%
Total nonemployer establishments, 2017	6,085	2,245,127	25,701,671
All firms, 2012	6,730	2,100,187	27,626,360
Men-owned firms, 2012	3,426	1,084,885	14,844,597
Women-owned firms, 2012	2,449	807,817	9,878,397
Minority-owned firms, 2012	2,033	926,112	7,952,386
Nonminority-owned firms, 2012	4,423	1,121,749	18,987,918
Veteran-owned firms, 2012	739	185,756	2,521,682
Nonveteran-owned firms, 2012	5,574	1,846,686	24,070,685
Geography			
Population per square mile, 2010	97.2	350.6	87.4
Land area in square miles, 2010	1,016.62	53,624.76	3,531,905.43
FIPS Code	12055	12	00

Source: U.S. Census Bureau, State & County QuickFacts.

Labor Force, Employment, and Unemployment

	August 2019				August 2018			
	LABOR	EMPLOY-	UNEMPLOYMENT		LABOR	EMPLOY-	UNEMPLOYMENT	
	FORCE	MENT	LEVEL	RATE (%)	FORCE	MENT	LEVEL	RATE (%)
Workforce Region 19	75,721	72,105	3,616	4.8	75,155	71,514	3,641	4.8
DeSoto County	13,688	13,150	538	3.9	13,478	12,927	551	4.1
Hardee County	8,124	7,614	510	6.3	8,343	7,810	533	6.4
Highlands County	35,743	33,895	1,848	5.2	35,660	33,819	1,841	5.2
Okeechobee County	18,166	17,446	720	4.0	17,674	16,958	716	4.1
Florida	10,455,000	10,086,000	368,000	3.5	10,184,000	9,811,000	373,000	3.7
United States	164,019,000	157,816,000	6,203,000	3.8	161,909,000	155,539,000	6,370,000	3.9

Source: U.S. Department of Labor, Bureau of Labor Statistics, Local Area Unemployment Statistics.

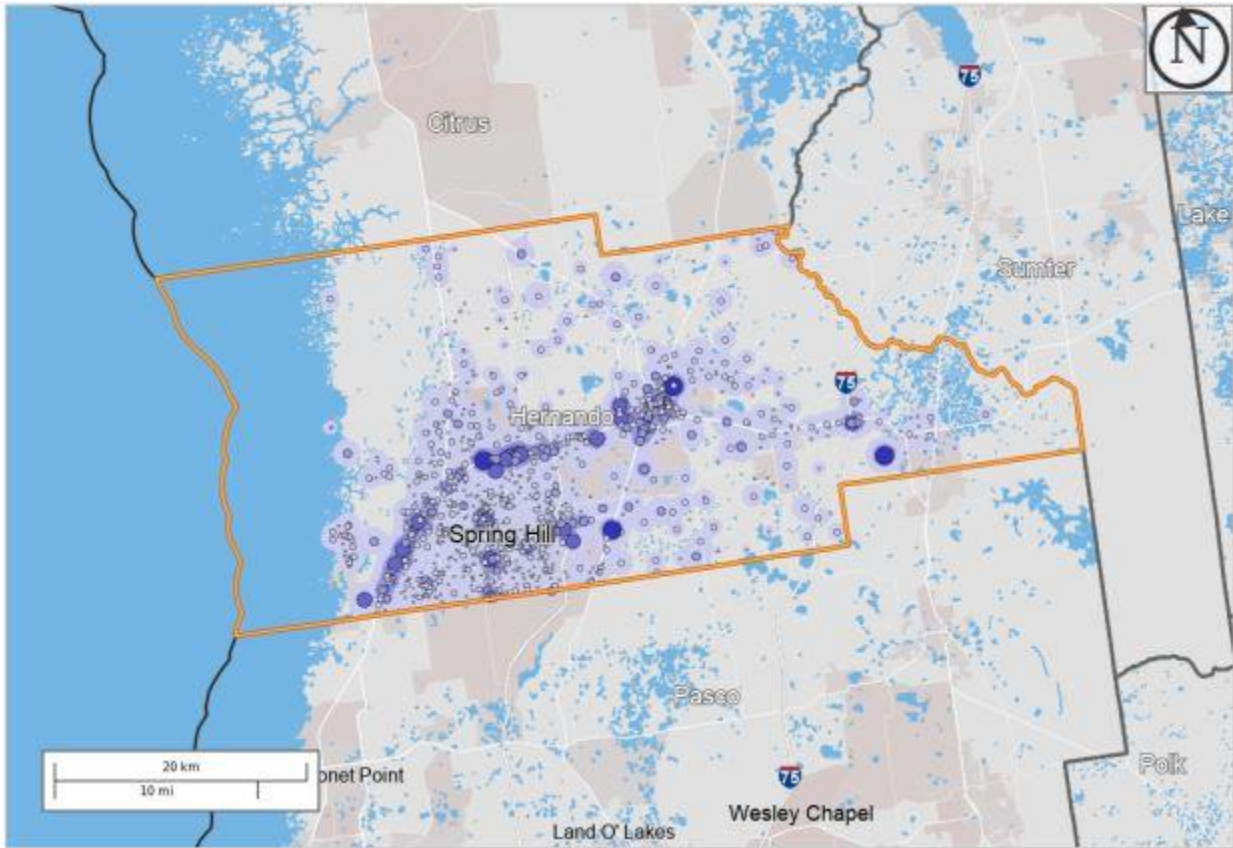
Population

	Population Estimate (as of July 1)							
	2011	2012	2013	2014	2015	2016	2017	2018
Workforce Region 19	200,871	200,390	199,803	200,812	202,893	206,397	209,702	211,695
DeSoto County	34,841	35,006	34,905	35,344	35,650	36,261	37,252	37,489
Hardee County	27,682	27,444	27,319	27,281	27,185	27,229	27,202	27,245
Highlands County	98,477	98,222	98,088	98,606	100,222	102,191	104,060	105,424
Okeechobee County	39,871	39,718	39,491	39,581	39,836	40,716	41,188	41,537
Florida	19,093,352	19,326,230	19,563,166	19,860,330	20,224,249	20,629,982	20,976,812	21,299,325
United States	311,580,009	313,874,218	316,057,727	318,386,421	320,742,673	323,071,342	325,147,121	327,167,434

Source: U.S. Census Bureau, Population Division.

Highlands County

Where Workers Work in Highlands County



Map Legend

Job Density [Jobs/Sq. Mile]

- 5 - 283
- 284 - 1,118
- 1,119 - 2,509
- 2,510 - 4,458
- 4,459 - 6,963

Job Count [Jobs/Census Block]

- 1 - 5
- 6 - 70
- 71 - 355
- 356 - 1,120
- 1,121 - 2,734

Selection Areas

- Analysis Selection



Source: U.S. Census Bureau, OnTheMap Application and Longitudinal Employer-Household Dynamics program.

Highlands County

Work Area Profile Summary

	Count	Share
Total Primary Jobs	24,417	100.0%
Jobs by Worker Age		
Age 29 or younger	5,155	21.1%
Age 30 to 54	12,284	50.3%
Age 55 or older	6,978	28.6%
Jobs by Earnings		
\$1,250 per month or less	6,529	26.7%
\$1,251 to \$3,333 per month	11,494	47.1%
More than \$3,333 per month	6,394	26.2%
Jobs by NAICS Industry Sector		
Agriculture, Forestry, Fishing and Hunting	2,374	9.7%
Mining, Quarrying, and Oil and Gas Extraction	0	0.0%
Utilities	75	0.3%
Construction	1,181	4.8%
Manufacturing	746	3.1%
Wholesale Trade	471	1.9%
Retail Trade	3,759	15.4%
Transportation and Warehousing	286	1.2%
Information	96	0.4%
Finance and Insurance	465	1.9%
Real Estate and Rental and Leasing	308	1.3%
Professional, Scientific, and Technical Services	705	2.9%
Management of Companies and Enterprises	92	0.4%
Administration & Support, Waste Management and Remediation	1,521	6.2%
Educational Services	2,229	9.1%
Health Care and Social Assistance	5,223	21.4%
Arts, Entertainment, and Recreation	588	2.4%
Accommodation and Food Services	2,253	9.2%
Other Services (excluding Public Administration)	623	2.6%
Public Administration	1,422	5.8%

Source: U.S. Census Bureau, OnTheMap Application and Longitudinal Employer-Household Dynamics program.

Highlands County

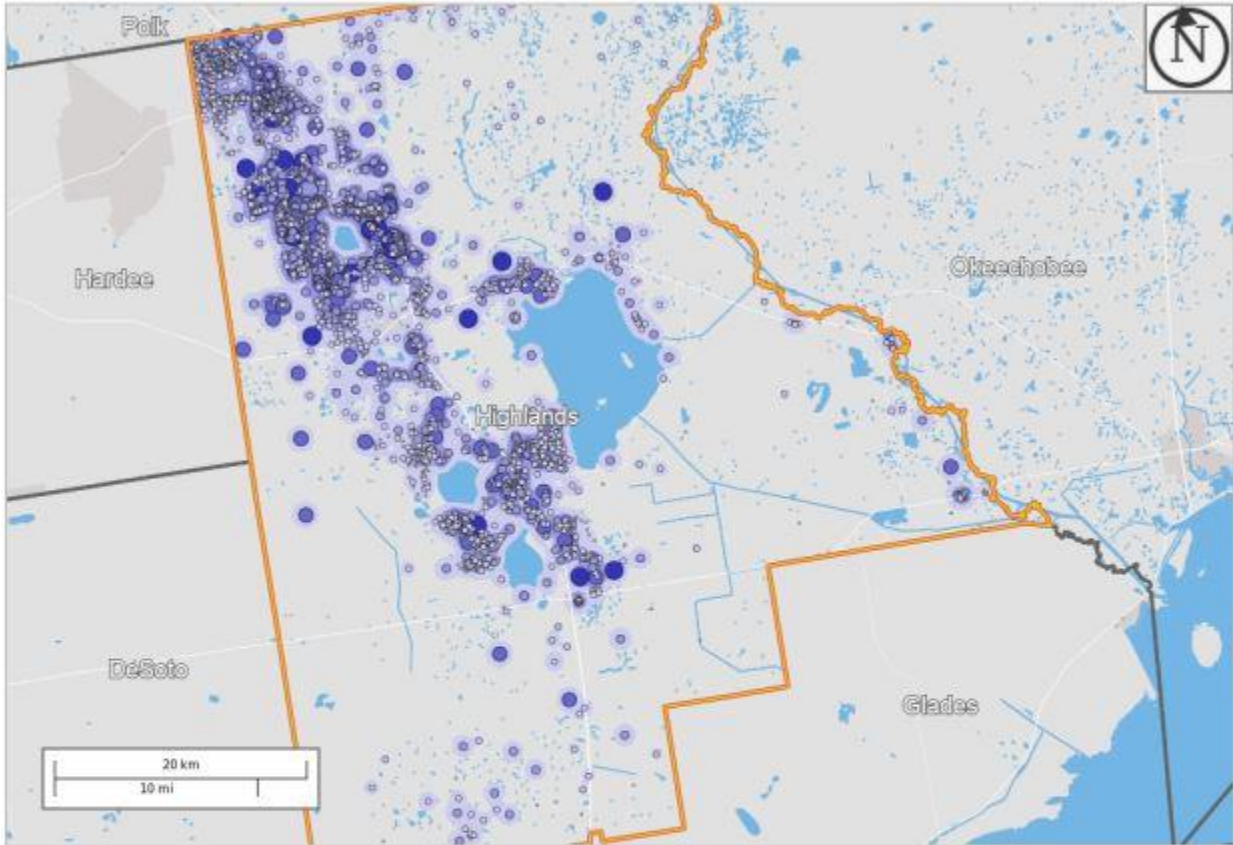
Work Area Profile Summary - Demographics

Jobs by Worker Race		
White Alone	20,205	82.7%
Black or African American Alone	3,122	12.8%
American Indian or Alaska Native Alone	151	0.6%
Asian Alone	603	2.5%
Native Hawaiian or Other Pacific Islander Alone	24	0.1%
Two or More Race Groups	312	1.3%
Jobs by Worker Ethnicity		
Not Hispanic or Latino	19,481	79.8%
Hispanic or Latino	4,936	20.2%
Jobs by Worker Educational Attainment		
Less than high school	3,340	13.7%
High school or equivalent, no college	5,644	23.1%
Some college or Associate degree	6,198	25.4%
Bachelor's degree or advanced degree	4,080	16.7%
Educational attainment not available (workers aged 29 or younger)	5,155	21.1%
Jobs by Worker Sex		
Male	11,442	46.9%
Female	12,975	53.1%

Source: U.S. Census Bureau, OnTheMap Application and Longitudinal Employer-Household Dynamics program.

Highlands County

Where Workers Live in Highlands County



Map Legend

- Job Density [Jobs/Sq. Mile]**
- 5 - 47
 - 48 - 176
 - 177 - 390
 - 391 - 690
 - 691 - 1,076

- Job Count [Jobs/Census Block]**
- 1 - 2
 - 3 - 12
 - 13 - 41
 - 42 - 96
 - 97 - 188

- Selection Areas**
- Analysis Selection



Source: U.S. Census Bureau, OnTheMap Application and Longitudinal Employer-Household Dynamics program.

Highlands County

Home Area Profile Summary

	Count	Share
Total Primary Jobs	31,581	100.0%
Jobs by Worker Age		
Age 29 or younger	6,768	21.4%
Age 30 to 54	15,859	50.2%
Age 55 or older	8,954	28.4%
Jobs by Earnings		
\$1,250 per month or less	7,779	24.6%
\$1,251 to \$3,333 per month	14,230	45.1%
More than \$3,333 per month	9,572	30.3%
Jobs by NAICS Industry Sector		
Agriculture, Forestry, Fishing and Hunting	1,893	6.0%
Mining, Quarrying, and Oil and Gas Extraction	32	0.1%
Utilities	112	0.4%
Construction	2,173	6.9%
Manufacturing	1,350	4.3%
Wholesale Trade	976	3.1%
Retail Trade	4,460	14.1%
Transportation and Warehousing	749	2.4%
Information	247	0.8%
Finance and Insurance	814	2.6%
Real Estate and Rental and Leasing	490	1.6%
Professional, Scientific, and Technical Services	1,220	3.9%
Management of Companies and Enterprises	220	0.7%
Administration & Support, Waste Management and Remediation	2,221	7.0%
Educational Services	2,600	8.2%
Health Care and Social Assistance	5,191	16.4%
Arts, Entertainment, and Recreation	795	2.5%
Accommodation and Food Services	2,937	9.3%
Other Services (excluding Public Administration)	913	2.9%
Public Administration	2,188	6.9%

Source: U.S. Census Bureau, OnTheMap Application and Longitudinal Employer-Household Dynamics program.

Highlands County

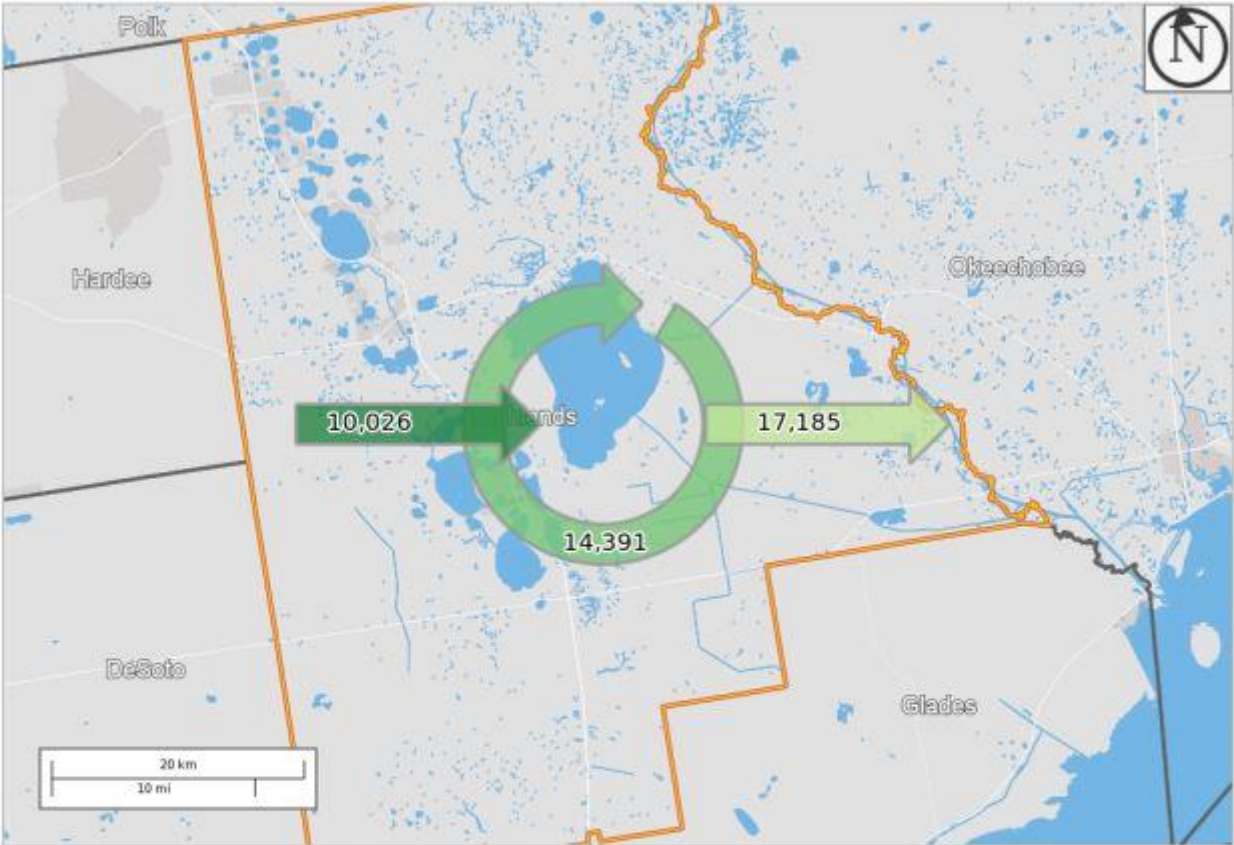
Home Area Profile Summary - Demographics

Jobs by Worker Race		
White Alone	26,163	82.8%
Black or African American Alone	3,894	12.3%
American Indian or Alaska Native Alone	244	0.8%
Asian Alone	812	2.6%
Native Hawaiian or Other Pacific Islander Alone	50	0.2%
Two or More Race Groups	418	1.3%
Jobs by Worker Ethnicity		
Not Hispanic or Latino	25,209	79.8%
Hispanic or Latino	6,372	20.2%
Jobs by Worker Educational Attainment		
Less than high school	4,164	13.2%
High school or equivalent, no college	7,063	22.4%
Some college or Associate degree	7,880	25.0%
Bachelor's degree or advanced degree	5,706	18.1%
Educational attainment not available (workers aged 29 or younger)	6,768	21.4%
Jobs by Worker Sex		
Male	15,766	49.9%
Female	15,815	50.1%

Source: U.S. Census Bureau, OnTheMap Application and Longitudinal Employer-Household Dynamics program.

Highlands County

Labor Inflow/Outflow Map



Map Legend

Selection Areas
 * Analysis Selection

Inflow/Outflow
 * Employed and Live in Selection Area
 * Employed in Selection Area, Live Outside
 * Live in Selection Area, Employed Outside
 * Outside
 Note: Overlay arrows do not indicate directionality of worker flow between home and employment locations.



Source: U.S. Census Bureau, OnTheMap Application and Longitudinal Employer-Household Dynamics program.

Of the 24,417 people who are employed in Highlands County, 14,391 (58.9%) live and work in the county. There are 10,026 (41.1%) workers who live outside Highlands County and work within the county. Of the 31,581 workers who live within Highlands County, 17,190 (54.4%) residents work outside the county. There is a net outflow of - 7,164 workers from Highlands County.

Highlands County

Labor Inflow/Outflow Summary

Selection Area Labor Market Size (Primary Jobs)	Count	Share
Employed in the Selection Area	24,417	100.0%
Living in the Selection Area	31,581	129.3%
Net Job Inflow (+) or Outflow (-)	-7,164	-
In-Area Labor Force Efficiency (Primary Jobs)		
Living in the Selection Area	31,581	100.0%
Living and Employed in the Selection Area	14,391	45.6%
Living in the Selection Area but Employed Outside	17,190	54.4%
In-Area Employment Efficiency (Primary Jobs)		
Employed in the Selection Area	24,417	100.0%
Employed and Living in the Selection Area	14,391	58.9%
Employed in the Selection Area but Living Outside	10,026	41.1%
Outflow Job Characteristics		
External Jobs Filled by Residents	17,190	100.0%
Workers Aged 29 or younger	4,210	24.5%
Workers Aged 30 to 54	8,516	49.5%
Workers Aged 55 or older	4,464	26.0%
Workers Earning \$1,250 per month or less	4,242	24.7%
Workers Earning \$1,251 to \$3,333 per month	7,361	42.8%
Workers Earning More than \$3,333 per month	5,587	32.5%
Workers in the "Goods Producing" Industry Class	3,146	18.3%
Workers in the "Trade, Transportation, and Utilities" Industry Class	4,455	25.9%
Workers in the "All Other Services" Industry Class	9,589	55.8%

Source: U.S. Census Bureau, OnTheMap Application and Longitudinal Employer-Household Dynamics program.

Highlands County

Labor Inflow/Outflow Summary (continued)

Inflow Job Characteristics (Primary Jobs)	Count	Share
Internal Jobs Filled by Outside Workers	10,026	100.0%
Workers Aged 29 or younger	2,597	25.9%
Workers Aged 30 to 54	4,941	49.3%
Workers Aged 55 or older	2,488	24.8%
Workers Earning \$1,250 per month or less	2,992	29.8%
Workers Earning \$1,251 to \$3,333 per month	4,625	46.1%
Workers Earning More than \$3,333 per month	2,409	24.0%
Workers in the "Goods Producing" Industry Class	1,999	19.9%
Workers in the "Trade, Transportation, and Utilities" Industry Class	2,749	27.4%
Workers in the "All Other Services" Industry Class	5,278	52.6%
Interior Flow Job Characteristics (Primary Jobs)		
Internal Jobs Filled by Residents	14,391	100.0%
Workers Aged 29 or younger	2,558	17.8%
Workers Aged 30 to 54	7,343	51.0%
Workers Aged 55 or older	4,490	31.2%
Workers Earning \$1,250 per month or less	3,537	24.6%
Workers Earning \$1,251 to \$3,333 per month	6,869	47.7%
Workers Earning More than \$3,333 per month	3,985	27.7%
Workers in the "Goods Producing" Industry Class	2,302	16.0%
Workers in the "Trade, Transportation, and Utilities" Industry Class	1,842	12.8%
Workers in the "All Other Services" Industry Class	10,247	71.2%

Source: U.S. Census Bureau, OnTheMap Application and Longitudinal Employer-Household Dynamics program.

Work Destination Summary

Where Workers are Employed Who Live in Highlands County

	Count	Share
Total Primary Jobs	31,581	100.0%
Job Counts by Counties Where Workers are Employed - Primary Jobs		
Highlands County, FL	14,391	45.6%
Polk County, FL	2,514	8.0%
Lee County, FL	1,655	5.2%
Miami-Dade County, FL	1,131	3.6%
Hillsborough County, FL	1,127	3.6%
Palm Beach County, FL	977	3.1%
Broward County, FL	948	3.0%
Sarasota County, FL	761	2.4%
Orange County, FL	713	2.3%
Hardee County, FL	667	2.1%
St. Lucie County, FL	631	2.0%
Collier County, FL	607	1.9%
Charlotte County, FL	591	1.9%
Manatee County, FL	503	1.6%
Okeechobee County, FL	446	1.4%
DeSoto County, FL	400	1.3%
Pinellas County, FL	400	1.3%
Indian River County, FL	296	0.9%
Brevard County, FL	247	0.8%
Martin County, FL	237	0.8%
Hendry County, FL	223	0.7%
Duval County, FL	206	0.7%
Osceola County, FL	179	0.6%
Seminole County, FL	173	0.5%
Glades County, FL	171	0.5%
All Other Locations	1,387	4.4%

Source: U.S. Census Bureau, OnTheMap Application and Longitudinal Employer-Household Dynamics program.

Home Destination Summary

Where Workers Live Who are Employed in Highlands County

	Count	Share
Total Primary Jobs	24,417	100.0%
Job Counts by Counties Where Workers Live - Primary Jobs		
Highlands County, FL	14,391	58.9%
Polk County, FL	1,861	7.6%
Hillsborough County, FL	555	2.3%
Hardee County, FL	553	2.3%
Orange County, FL	524	2.1%
Lee County, FL	518	2.1%
Miami-Dade County, FL	418	1.7%
Palm Beach County, FL	381	1.6%
Broward County, FL	359	1.5%
Pinellas County, FL	340	1.4%
Brevard County, FL	317	1.3%
Indian River County, FL	281	1.2%
DeSoto County, FL	268	1.1%
Sarasota County, FL	258	1.1%
Osceola County, FL	253	1.0%
Collier County, FL	240	1.0%
St. Lucie County, FL	240	1.0%
Seminole County, FL	217	0.9%
Manatee County, FL	201	0.8%
Pasco County, FL	200	0.8%
Charlotte County, FL	176	0.7%
Okeechobee County, FL	167	0.7%
Hendry County, FL	161	0.7%
Volusia County, FL	156	0.6%
Lake County, FL	146	0.6%
All Other Locations	1,236	5.1%

Source: U.S. Census Bureau, OnTheMap Application and Longitudinal Employer-Household Dynamics program.

**Florida Department of Economic Opportunity
Bureau of Workforce Statistics and Economic Research
(WSER)**

**Caldwell Building
MSC G-020
107 E. Madison Street
Tallahassee, Florida 32399-4111
Phone (850) 245-7257**



www.floridajobs.org/wser