

Summary of Employment, Demographics, and Commuting Patterns for Okeechobee County, Florida



**FLORIDA DEPARTMENT *of*
ECONOMIC OPPORTUNITY**

October 2019

Contents

Labor Shed Analysis 3

OnTheMap, Census Bureau..... 3

Florida Department of Economic Opportunity, Bureau of Workforce Statistics and Economic Research (WSER) 3

Executive Summary 4

People QuickFacts 5

Business and Geography QuickFacts 7

Labor Force, Employment, and Unemployment 7

Population 7

Where Workers Work in Okeechobee County 8

Work Area Profile Summary 9

Work Area Profile Summary - Demographics 10

Where Workers Live in Okeechobee County 11

Home Area Profile Summary 12

Home Area Profile Summary - Demographics 13

Labor Inflow/Outflow Map 14

Labor Inflow/Outflow Summary 15

Work Destination Summary 17

Home Destination Summary 18

Labor Shed Analysis

A labor shed analysis is defined as where workers work and where workers live relative to a user-defined selection area. This analysis helps to determine where a labor market draws its commuting workers. Labor shed studies can draw comparisons between various geographies including state, Congressional District, Metropolitan Statistical Area (MSA), county, Workforce Investment Area (WIA), Zip Code, and Census tract. By indicating how many of the selection area workers work outside the area, labor sheds can help identify potential pools of workers who would be available for work in the user-defined area.

Labor shed studies provide economic developers and existing or prospective employers a tool to understand the local labor market and make informed expansion and site selection decisions. In addition, labor shed studies can help indicate potential impacts from environmental, social, or economic incidents.

OnTheMap, Census Bureau

OnTheMap is a mapping and reporting tool developed by the U.S. Census Bureau showing employment and home locations of workers with companion reports for user-defined areas. It is the first synthetic data product released by the Census Bureau. OnTheMap is an important tool for Florida to perform labor inflow/outflow analyses and provide commuting data to planning and economic development agencies as well as Regional Workforce Boards. OnTheMap data is also used by the Department of Economic Opportunity to help quantify natural disaster impacts for emergency management agencies based on where workers live and where they work.

OnTheMap integrates existing data from state-supplied administrative records on workers and employers with existing federal censuses, surveys, and other administrative records. The state Labor Market Information (LMI) agencies supply key data from unemployment wage records and from businesses each quarter. The Census Bureau merges the state-supplied data with current demographic information to produce the data found in OnTheMap. By combining data from different administrative sources, censuses, and surveys, the Census Bureau produces local employment information that was not previously available.

Florida Department of Economic Opportunity, Bureau of Workforce Statistics and Economic Research (WSER)

The Florida Department of Economic Opportunity, Bureau of Workforce Statistics and Economic Research (WSER), produces, analyzes, and distributes labor statistics to improve economic decision making. These data are produced as part of the federal/state cooperative statistical program with the U.S. Department of Labor, Bureau of Labor Statistics, and the Employment and Training Administration.

Executive Summary

The analysis of workforce and demographic characteristics, including commuting patterns of Okeechobee County was conducted to provide economic data on the population and labor force living or working in the county. The report is useful for detailing where workers work and live in order to align resources. This report includes population, labor force, and demographics for Okeechobee County.

Workers employed in Okeechobee County are clustered in the Health Care and Social Assistance (14.6%), and Construction (12.5%) industries. Workers living in Okeechobee County are concentrated in the Health Care and Social Assistance (13.1%), and Retail Trade (12.9%) industries.

A detailed examination of commuting patterns for Okeechobee County shows that the county has a net outflow of -1,495 workers. Using the latest annual Census data available, there were 11,324 workers employed in Okeechobee County and 12,819 workers living in Okeechobee County. Of the workers who lived in the county, 7,373 workers (57.5%) were employed outside the county.

With 57.5% of workers who reside in Okeechobee County employed outside the county, Okeechobee County had the 31st lowest outflow ranking among Florida counties. Glades County (89.0%) had the highest outflow rate, followed by Union County (86.3%), and Gilchrist County (85.1%). Miami-Dade County (23.4%), Duval County (26.0%), and Escambia County (28.0%) had the lowest worker outflow rates.

Of the 7,373 Okeechobee County workers employed outside the county, the top destination counties are Palm Beach County (958 workers), St. Lucie County (909 workers), and Broward County (705 workers). Of the 5,878 Okeechobee County workers living outside the county, the top origin counties are St. Lucie County (983 workers), Palm Beach County (677 workers), and Highlands County (446 workers).

Okeechobee County

People QuickFacts

	Okeechobee County	Florida	United States
Population			
Population estimates, July 1, 2018, (V2018)	41,537	21,299,325	327,167,434
Population estimates base, April 1, 2010, (V2018)	39,996	18,804,580	308,758,105
Population, percent change - April 1, 2010 (estimates base) to July 1, 2018, (V2018)	3.9%	13.3%	6.0%
Population, Census, April 1, 2010	39,996	18,801,310	308,745,538
Age and Sex			
Persons under 5 years, percent	6.0%	5.4%	6.1%
Persons under 18 years, percent	21.3%	19.9%	22.4%
Persons 65 years and over, percent	19.8%	20.5%	16.0%
Female persons, percent	46.3%	51.1%	50.8%
Race and Hispanic Origin			
White alone, percent	86.8%	77.3%	76.5%
Black or African American alone, percent(a)	9.0%	16.9%	13.4%
American Indian and Alaska Native alone, percent(a)	1.6%	0.5%	1.3%
Asian alone, percent(a)	1.0%	3.0%	5.9%
Native Hawaiian and Other Pacific Islander alone, percent(a)	0.1%	0.1%	0.2%
Two or More Races, percent	1.4%	2.2%	2.7%
Hispanic or Latino, percent(b)	25.5%	26.1%	18.3%
White alone, not Hispanic or Latino, percent	63.0%	53.5%	60.4%
Population Characteristics			
Veterans, 2013-2017	3,040	1,454,632	18,939,219
Foreign born persons, percent, 2013-2017	12.5%	20.2%	13.4%
Housing			
Housing units, July 1, 2018, (V2018)	18,730	9,547,305	138,537,078
Owner-occupied housing unit rate, 2013-2017	72.2%	64.8%	63.8%
Median value of owner-occupied housing units, 2013-2017	\$89,900	\$178,700	\$193,500
Median selected monthly owner costs -with a mortgage, 2013-2017	\$1,005	\$1,432	\$1,515
Median selected monthly owner costs -without a mortgage, 2013-2017	\$302	\$475	\$474
Median gross rent, 2013-2017	\$726	\$1,077	\$982
Building permits, 2018	52	144,427	1,328,827
Legend			
The vintage year (e.g., V2016) refers to the final year of the series (2010 thru 2016). Different vintage years of estimates are not comparable.			
<i>Fact Notes</i>			
(a) Includes persons reporting only one race			
(b) Hispanics may be of any race, so also are included in applicable race categories			
(c) Economic Census - Puerto Rico data are not comparable to U.S. Economic Census data			
<i>Value Flags</i>			
"-." No or too few sample observations were available to compute an estimate.			
"D" Suppressed to avoid disclosure of confidential information			
"F" Fewer than 25 firms			
"NA" Not available			
"S" Suppressed; does not meet publication standards			
"Z" Value greater than zero but less than half unit of measure shown			

Source: U.S. Census Bureau, State & County QuickFacts.

Okeechobee County

People QuickFacts (continued)

	Okeechobee County	Florida	United States
Families & Living Arrangements			
Households, 2013-2017	13,333	7,510,882	118,825,921
Persons per household, 2013-2017	2.79	2.64	2.63
Living in same house 1 year ago, percent of persons age 1 year+, 2013-2017	91.8%	84.1%	85.4%
Language other than English spoken at home, percent of persons age 5 years+, 2013-2017	23.5%	28.7%	21.3%
Computer and Internet Use			
Households with a computer, percent, 2013-2017	77.1%	88.1%	87.2%
Households with a broadband Internet subscription, percent, 2013-2017	58.1%	78.6%	78.1%
Education			
High school graduate or higher, percent of persons age 25 years+, 2013-2017	73.9%	87.6%	87.3%
Bachelor's degree or higher, percent of persons age 25 years+, 2013-2017	11.0%	28.5%	30.9%
Health			
With a disability, under age 65 years, percent, 2013-2017	10.8%	8.6%	8.7%
Persons without health insurance, under age 65 years, percent	22.5%	16.0%	10.0%
Economy			
In civilian labor force, total, percent of population age 16 years+, 2013-2017	47.4%	58.4%	63.0%
In civilian labor force, female, percent of population age 16 years+, 2013-2017	44.2%	54.1%	58.2%
Total accommodation and food services sales, 2012 (\$1,000)(c)	40,090	49,817,925	708,138,598
Total health care and social assistance receipts/revenue, 2012 (\$1,000)(c)	162,366	124,061,425	2,040,441,203
Total manufacturers shipments, 2012 (\$1,000)(c)	D	96,924,106	5,696,729,632
Total merchant wholesaler sales, 2012 (\$1,000)(c)	D	252,626,608	5,208,023,478
Total retail sales, 2012 (\$1,000)(c)	508,073	273,867,145	4,219,821,871
Total retail sales per capita, 2012(c)	\$12,873	\$14,177	\$13,443
Transportation			
Mean travel time to work (minutes), workers age 16 years+, 2013-2017	24.0	27.0	26.4
Income & Poverty			
Median household income (in 2017 dollars), 2013-2017	\$39,059	\$50,883	\$57,652
Per capita income in past 12 months (in 2017 dollars), 2013-2017	\$18,611	\$28,774	\$31,177
Persons in poverty, percent	21.8%	13.6%	11.8%
Legend			
The vintage year (e.g., V2016) refers to the final year of the series (2010 thru 2016). Different vintage years of estimates are not comparable.			
Fact Notes			
(a) Includes persons reporting only one race			
(b) Hispanics may be of any race, so also are included in applicable race categories			
(c) Economic Census - Puerto Rico data are not comparable to U.S. Economic Census data			
Value Flags			
"-" No or too few sample observations were available to compute an estimate.			
"D" Suppressed to avoid disclosure of confidential information			
"F" Fewer than 25 firms			
"NA" Not available			
"S" Suppressed; does not meet publication standards			
"Z" Value greater than zero but less than half unit of measure shown			

Source: U.S. Census Bureau, State & County QuickFacts.

Okeechobee County

Business and Geography QuickFacts

	Okeechobee County	Florida	United States
Businesses			
Total employer establishments, 2016	791	546,218	7,757,807
Total employment, 2016	7,042	8,169,642	126,752,238
Total annual payroll, 2016 (\$1,000)	240,821	363,336,322	6,435,142,055
Total employment, percent change, 2015-2016	3.4%	5.0%	2.1%
Total nonemployer establishments, 2017	2,248	2,245,127	25,701,671
All firms, 2012	3,028	2,100,187	27,626,360
Men-owned firms, 2012	1,382	1,084,885	14,844,597
Women-owned firms, 2012	1,264	807,817	9,878,397
Minority-owned firms, 2012	551	926,112	7,952,386
Nonminority-owned firms, 2012	2,320	1,121,749	18,987,918
Veteran-owned firms, 2012	255	185,756	2,521,682
Nonveteran-owned firms, 2012	2,589	1,846,686	24,070,685
Geography			
Population per square mile, 2010	52.0	350.6	87.4
Land area in square miles, 2010	768.91	53,624.76	3,531,905.43
FIPS Code	12093	12	00

Source: U.S. Census Bureau, State & County QuickFacts.

Labor Force, Employment, and Unemployment

	August 2019				August 2018			
	LABOR	EMPLOY-	UNEMPLOYMENT		LABOR	EMPLOY-	UNEMPLOYMENT	
	FORCE	MENT	LEVEL	RATE (%)	FORCE	MENT	LEVEL	RATE (%)
Workforce Region 19	75,721	72,105	3,616	4.8	75,155	71,514	3,641	4.8
DeSoto County	13,688	13,150	538	3.9	13,478	12,927	551	4.1
Hardee County	8,124	7,614	510	6.3	8,343	7,810	533	6.4
Highlands County	35,743	33,895	1,848	5.2	35,660	33,819	1,841	5.2
Okeechobee County	18,166	17,446	720	4.0	17,674	16,958	716	4.1
Florida	10,455,000	10,086,000	368,000	3.5	10,184,000	9,811,000	373,000	3.7
United States	164,019,000	157,816,000	6,203,000	3.8	161,909,000	155,539,000	6,370,000	3.9

Source: U.S. Department of Labor, Bureau of Labor Statistics, Local Area Unemployment Statistics.

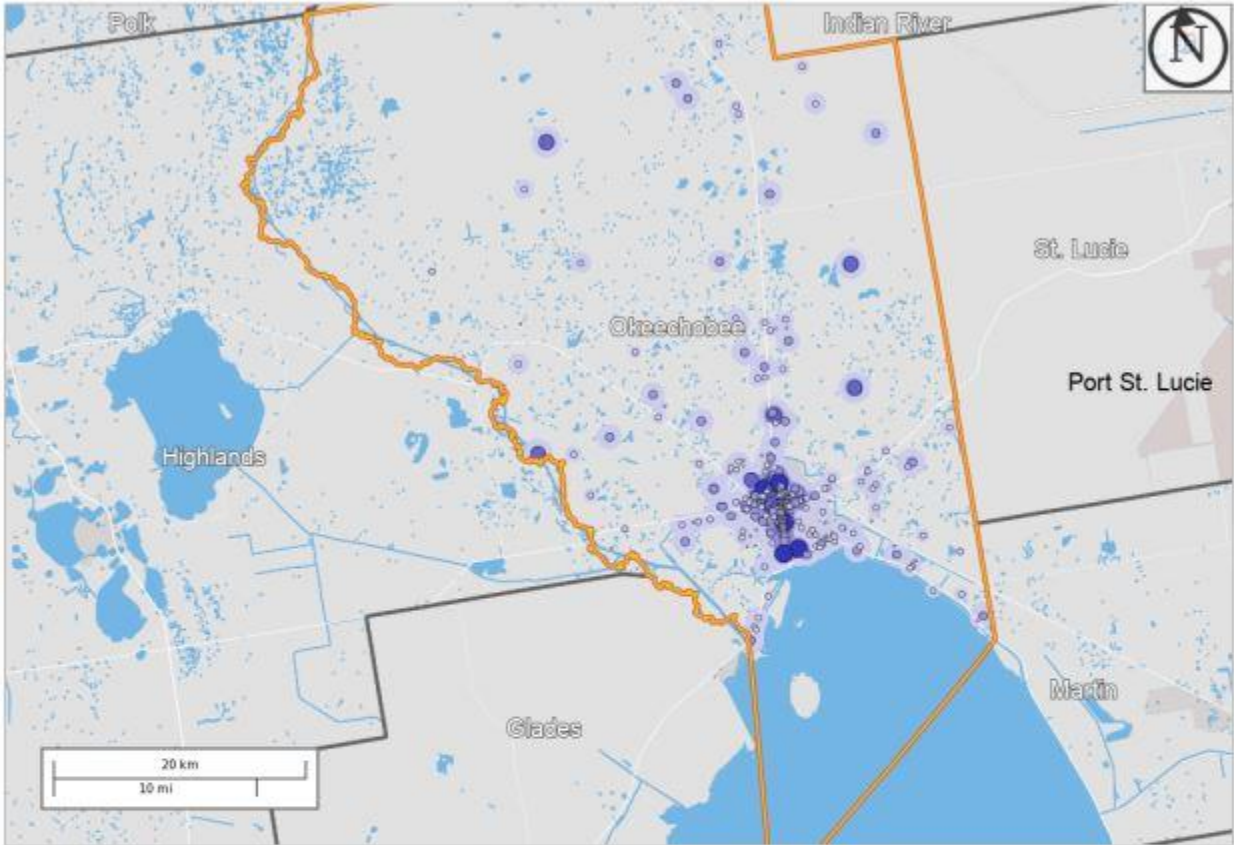
Population

	Population Estimate (as of July 1)							
	2011	2012	2013	2014	2015	2016	2017	2018
Workforce Region 19	200,871	200,390	199,803	200,812	202,893	206,397	209,702	211,695
DeSoto County	34,841	35,006	34,905	35,344	35,650	36,261	37,252	37,489
Hardee County	27,682	27,444	27,319	27,281	27,185	27,229	27,202	27,245
Highlands County	98,477	98,222	98,088	98,606	100,222	102,191	104,060	105,424
Okeechobee County	39,871	39,718	39,491	39,581	39,836	40,716	41,188	41,537
Florida	19,093,352	19,326,230	19,563,166	19,860,330	20,224,249	20,629,982	20,976,812	21,299,325
United States	311,580,009	313,874,218	316,057,727	318,386,421	320,742,673	323,071,342	325,147,121	327,167,434

Source: U.S. Census Bureau, Population Division.

Okeechobee County

Where Workers Work in Okeechobee County



Map Legend

<p>Job Density [Jobs/Sq. Mile]</p> <ul style="list-style-type: none"> ■ 5 - 105 ■ 106 - 407 ■ 408 - 910 ■ 911 - 1,614 ■ 1,615 - 2,520 	<p>Job Count [Jobs/Census Block]</p> <ul style="list-style-type: none"> ● 1 - 2 ● 3 - 20 ● 21 - 101 ● 102 - 317 ● 318 - 773 <p>Selection Areas</p> <ul style="list-style-type: none"> ★ Analysis Selection
---	--



Source: U.S. Census Bureau, OnTheMap Application and Longitudinal Employer-Household Dynamics program.

Okeechobee County

Work Area Profile Summary

	Count	Share
Total Primary Jobs	11,324	100.0%
Jobs by Worker Age		
Age 29 or younger	2,498	22.1%
Age 30 to 54	5,989	52.9%
Age 55 or older	2,837	25.1%
Jobs by Earnings		
\$1,250 per month or less	2,214	19.6%
\$1,251 to \$3,333 per month	5,450	48.1%
More than \$3,333 per month	3,660	32.3%
Jobs by NAICS Industry Sector		
Agriculture, Forestry, Fishing and Hunting	845	7.5%
Mining, Quarrying, and Oil and Gas Extraction	20	0.2%
Utilities	58	0.5%
Construction	1,410	12.5%
Manufacturing	446	3.9%
Wholesale Trade	271	2.4%
Retail Trade	1,336	11.8%
Transportation and Warehousing	299	2.6%
Information	63	0.6%
Finance and Insurance	197	1.7%
Real Estate and Rental and Leasing	79	0.7%
Professional, Scientific, and Technical Services	460	4.1%
Management of Companies and Enterprises	2	0.0%
Administration & Support, Waste Management and Remediation	704	6.2%
Educational Services	863	7.6%
Health Care and Social Assistance	1,654	14.6%
Arts, Entertainment, and Recreation	92	0.8%
Accommodation and Food Services	1,086	9.6%
Other Services (excluding Public Administration)	337	3.0%
Public Administration	1,102	9.7%

Source: U.S. Census Bureau, OnTheMap Application and Longitudinal Employer-Household Dynamics program.

Okeechobee County

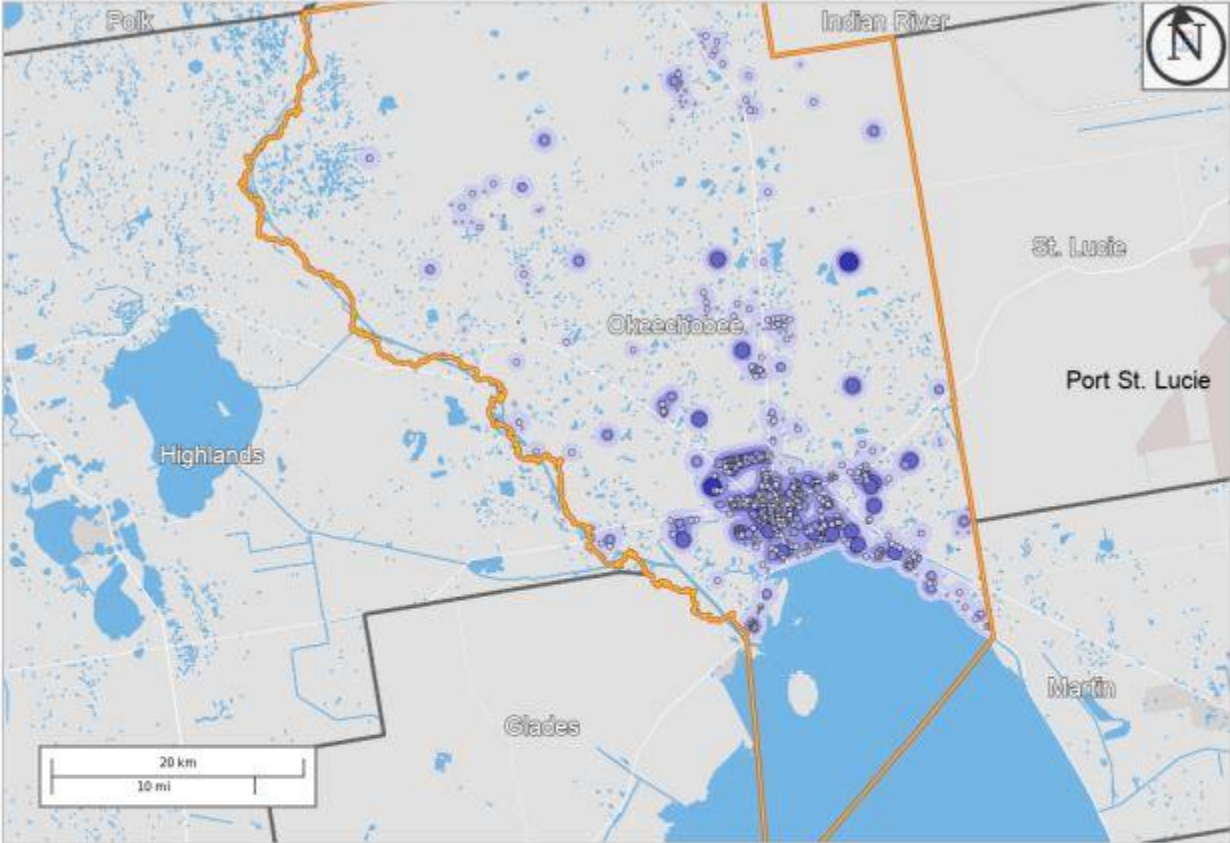
Work Area Profile Summary - Demographics

Jobs by Worker Race		
White Alone	9,461	83.5%
Black or African American Alone	1,390	12.3%
American Indian or Alaska Native Alone	97	0.9%
Asian Alone	236	2.1%
Native Hawaiian or Other Pacific Islander Alone	23	0.2%
Two or More Race Groups	117	1.0%
Jobs by Worker Ethnicity		
Not Hispanic or Latino	9,072	80.1%
Hispanic or Latino	2,252	19.9%
Jobs by Worker Educational Attainment		
Less than high school	1,645	14.5%
High school or equivalent, no college	2,685	23.7%
Some college or Associate degree	2,765	24.4%
Bachelor's degree or advanced degree	1,731	15.3%
Educational attainment not available (workers aged 29 or younger)	2,498	22.1%
Jobs by Worker Sex		
Male	6,069	53.6%
Female	5,255	46.4%

Source: U.S. Census Bureau, OnTheMap Application and Longitudinal Employer-Household Dynamics program.

Okeechobee County

Where Workers Live in Okeechobee County



Map Legend

- | | |
|---|--|
| <p>Job Density [Jobs/Sq. Mile]</p> <ul style="list-style-type: none"> ■ 5 - 47 ■ 48 - 176 ■ 177 - 390 ■ 391 - 689 ■ 690 - 1,075 | <p>Job Count [Jobs/Census Block]</p> <ul style="list-style-type: none"> ● 1 - 4 ● 5 - 28 ● 29 - 93 ● 94 - 219 ● 220 - 428 <p>Selection Areas</p> <ul style="list-style-type: none"> ★ Analysis Selection |
|---|--|



Source: U.S. Census Bureau, OnTheMap Application and Longitudinal Employer-Household Dynamics program.

Okeechobee County

Home Area Profile Summary

	Count	Share
Total Primary Jobs	12,819	100.0%
Jobs by Worker Age		
Age 29 or younger	2,941	22.9%
Age 30 to 54	6,661	52.0%
Age 55 or older	3,217	25.1%
Jobs by Earnings		
\$1,250 per month or less	2,644	20.6%
\$1,251 to \$3,333 per month	5,821	45.4%
More than \$3,333 per month	4,354	34.0%
Jobs by NAICS Industry Sector		
Agriculture, Forestry, Fishing and Hunting	809	6.3%
Mining, Quarrying, and Oil and Gas Extraction	20	0.2%
Utilities	130	1.0%
Construction	1,133	8.8%
Manufacturing	653	5.1%
Wholesale Trade	438	3.4%
Retail Trade	1,656	12.9%
Transportation and Warehousing	389	3.0%
Information	145	1.1%
Finance and Insurance	325	2.5%
Real Estate and Rental and Leasing	164	1.3%
Professional, Scientific, and Technical Services	633	4.9%
Management of Companies and Enterprises	86	0.7%
Administration & Support, Waste Management and Remediation	850	6.6%
Educational Services	1,014	7.9%
Health Care and Social Assistance	1,684	13.1%
Arts, Entertainment, and Recreation	249	1.9%
Accommodation and Food Services	1,197	9.3%
Other Services (excluding Public Administration)	376	2.9%
Public Administration	868	6.8%

Source: U.S. Census Bureau, OnTheMap Application and Longitudinal Employer-Household Dynamics program.

Okeechobee County

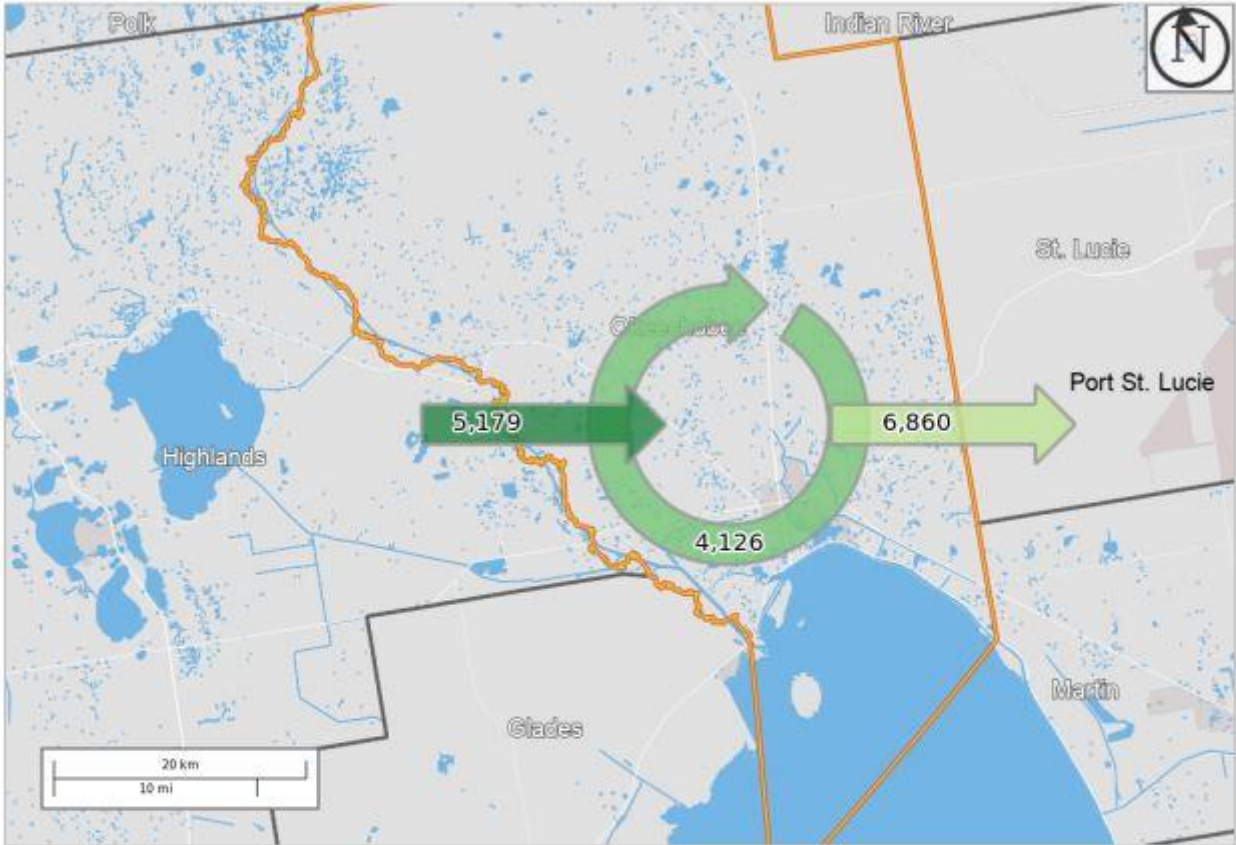
Home Area Profile Summary - Demographics

Jobs by Worker Race		
White Alone	11,213	87.5%
Black or African American Alone	1,117	8.7%
American Indian or Alaska Native Alone	92	0.7%
Asian Alone	228	1.8%
Native Hawaiian or Other Pacific Islander Alone	26	0.2%
Two or More Race Groups	143	1.1%
Jobs by Worker Ethnicity		
Not Hispanic or Latino	9,955	77.7%
Hispanic or Latino	2,864	22.3%
Jobs by Worker Educational Attainment		
Less than high school	1,693	13.2%
High school or equivalent, no college	2,847	22.2%
Some college or Associate degree	3,038	23.7%
Bachelor's degree or advanced degree	2,300	17.9%
Educational attainment not available (workers aged 29 or younger)	2,941	22.9%
Jobs by Worker Sex		
Male	6,694	52.2%
Female	6,125	47.8%

Source: U.S. Census Bureau, OnTheMap Application and Longitudinal Employer-Household Dynamics program.

Okeechobee County

Labor Inflow/Outflow Map



Map Legend

Selection Areas
 ★ Analysis Selection

Inflow/Outflow
 ◆ Employed and Live in Selection Area
 ◆ Employed in Selection Area, Live Outside
 ◆ Live in Selection Area, Employed Outside
 ◆ Outside
 Note: Overlay arrows do not indicate directionality of worker flow between home and employment locations.



Source: U.S. Census Bureau, OnTheMap Application and Longitudinal Employer-Household Dynamics program.

Of the 11,324 people who are employed in Okeechobee County, 5,446 (48.1%) live and work in the county. There are 5,878 (51.9%) workers who live outside Okeechobee County and work within the county. Of the 12,819 workers who live within Okeechobee County, 7,373 (57.5%) residents work outside the county. There is a net outflow of - 1,495 workers from Okeechobee County.

Okeechobee County

Labor Inflow/Outflow Summary

Selection Area Labor Market Size (Primary Jobs)	Count	Share
Employed in the Selection Area	11,324	100.0%
Living in the Selection Area	12,819	113.2%
Net Job Inflow (+) or Outflow (-)	-1,495	-
In-Area Labor Force Efficiency (Primary Jobs)		
Living in the Selection Area	12,819	100.0%
Living and Employed in the Selection Area	5,446	42.5%
Living in the Selection Area but Employed Outside	7,373	57.5%
In-Area Employment Efficiency (Primary Jobs)		
Employed in the Selection Area	11,324	100.0%
Employed and Living in the Selection Area	5,446	48.1%
Employed in the Selection Area but Living Outside	5,878	51.9%
Outflow Job Characteristics		
External Jobs Filled by Residents	7,373	100.0%
Workers Aged 29 or younger	1,702	23.1%
Workers Aged 30 to 54	3,808	51.6%
Workers Aged 55 or older	1,863	25.3%
Workers Earning \$1,250 per month or less	1,598	21.7%
Workers Earning \$1,251 to \$3,333 per month	3,016	40.9%
Workers Earning More than \$3,333 per month	2,759	37.4%
Workers in the "Goods Producing" Industry Class	1,383	18.8%
Workers in the "Trade, Transportation, and Utilities" Industry Class	1,948	26.4%
Workers in the "All Other Services" Industry Class	4,042	54.8%

Source: U.S. Census Bureau, OnTheMap Application and Longitudinal Employer-Household Dynamics program.

Okeechobee County

Labor Inflow/Outflow Summary (continued)

Inflow Job Characteristics (Primary Jobs)	Count	Share
Internal Jobs Filled by Outside Workers	5,878	100.0%
Workers Aged 29 or younger	1,259	21.4%
Workers Aged 30 to 54	3,136	53.4%
Workers Aged 55 or older	1,483	25.2%
Workers Earning \$1,250 per month or less	1,168	19.9%
Workers Earning \$1,251 to \$3,333 per month	2,645	45.0%
Workers Earning More than \$3,333 per month	2,065	35.1%
Workers in the "Goods Producing" Industry Class	1,489	25.3%
Workers in the "Trade, Transportation, and Utilities" Industry Class	1,299	22.1%
Workers in the "All Other Services" Industry Class	3,090	52.6%
Interior Flow Job Characteristics (Primary Jobs)		
Internal Jobs Filled by Residents	5,446	100.0%
Workers Aged 29 or younger	1,239	22.8%
Workers Aged 30 to 54	2,853	52.4%
Workers Aged 55 or older	1,354	24.9%
Workers Earning \$1,250 per month or less	1,046	19.2%
Workers Earning \$1,251 to \$3,333 per month	2,805	51.5%
Workers Earning More than \$3,333 per month	1,595	29.3%
Workers in the "Goods Producing" Industry Class	1,232	22.6%
Workers in the "Trade, Transportation, and Utilities" Industry Class	665	12.2%
Workers in the "All Other Services" Industry Class	3,549	65.2%

Source: U.S. Census Bureau, OnTheMap Application and Longitudinal Employer-Household Dynamics program.

Work Destination Summary

Where Workers are Employed Who Live in Okeechobee County

	Count	Share
Total Primary Jobs	12,819	100.0%
Job Counts by Counties Where Workers are Employed - Primary Jobs		
Okeechobee County, FL	5,446	42.5%
Palm Beach County, FL	958	7.5%
St. Lucie County, FL	909	7.1%
Broward County, FL	705	5.5%
Martin County, FL	671	5.2%
Miami-Dade County, FL	544	4.2%
Brevard County, FL	511	4.0%
Orange County, FL	422	3.3%
Indian River County, FL	355	2.8%
Hillsborough County, FL	277	2.2%
Glades County, FL	184	1.4%
Highlands County, FL	167	1.3%
Lee County, FL	164	1.3%
Polk County, FL	164	1.3%
Pinellas County, FL	130	1.0%
Seminole County, FL	105	0.8%
Duval County, FL	104	0.8%
Sarasota County, FL	95	0.7%
Osceola County, FL	85	0.7%
Volusia County, FL	83	0.6%
Collier County, FL	67	0.5%
Lake County, FL	64	0.5%
Manatee County, FL	62	0.5%
Pasco County, FL	51	0.4%
Hendry County, FL	39	0.3%
All Other Locations	457	3.6%

Source: U.S. Census Bureau, OnTheMap Application and Longitudinal Employer-Household Dynamics program.

Home Destination Summary

Where Workers Live Who are Employed in Okeechobee County

	Count	Share
Total Primary Jobs	11,324	100.0%
Job Counts by Counties Where Workers Live - Primary Jobs		
Okeechobee County, FL	5,446	48.1%
St. Lucie County, FL	983	8.7%
Palm Beach County, FL	677	6.0%
Highlands County, FL	446	3.9%
Broward County, FL	301	2.7%
Martin County, FL	291	2.6%
Miami-Dade County, FL	287	2.5%
Indian River County, FL	283	2.5%
Polk County, FL	268	2.4%
Orange County, FL	213	1.9%
Glades County, FL	206	1.8%
Lee County, FL	181	1.6%
Hillsborough County, FL	159	1.4%
Brevard County, FL	148	1.3%
Hendry County, FL	102	0.9%
Osceola County, FL	93	0.8%
DeSoto County, FL	87	0.8%
Pinellas County, FL	82	0.7%
Seminole County, FL	78	0.7%
Hardee County, FL	76	0.7%
Collier County, FL	74	0.7%
Volusia County, FL	73	0.6%
Marion County, FL	68	0.6%
Pasco County, FL	67	0.6%
Charlotte County, FL	56	0.5%
All Other Locations	579	5.1%

Source: U.S. Census Bureau, OnTheMap Application and Longitudinal Employer-Household Dynamics program.

**Florida Department of Economic Opportunity
Bureau of Workforce Statistics and Economic Research
(WSER)**

**Caldwell Building
MSC G-020
107 E. Madison Street
Tallahassee, Florida 32399-4111
Phone (850) 245-7257**



www.floridajobs.org/wser